



THE GEE'S BEND QUILTMAKERS

<https://www.alisonjacquesgallery.com/exhibitions/192/overview/>

<https://www.soulsgrowndeeep.org/gees-bend-quiltmakers>

The women of Gee's Bend—a small, remote, Black community in Alabama—have created hundreds of quilt masterpieces dating from the early twentieth century to the present. Resembling an inland island, Gee's Bend is surrounded on three sides by the Alabama River. The some seven hundred or so inhabitants of this small, rural community are mostly descendants of slaves, and for generations they worked the fields belonging to the local Pettway plantation. Quiltmakers there have produced countless patchwork masterpieces beginning as far back as the mid-nineteenth century, with the oldest existing examples dating from the 1920s. Enlivened by a visual imagination that extends the expressive boundaries of the quilt genre, these astounding creations constitute a crucial chapter in the history of American art. <https://www.soulsgrowndeeep.org/gees-bend-quiltmakers>

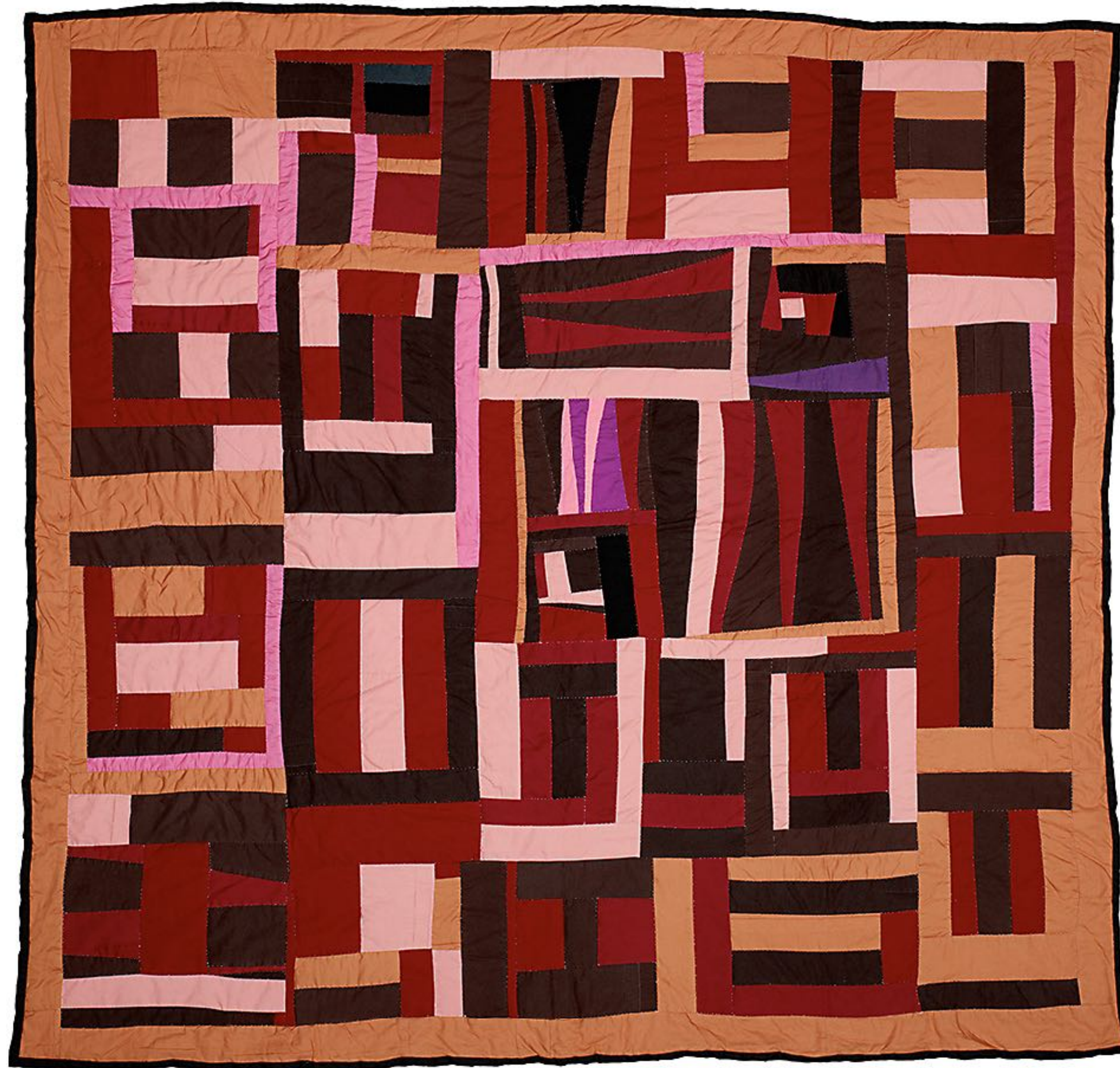


During the session we will browse the <https://www.soulsgrowndeeper.org/gees-bend-quiltmakers> online. (it could also be inspiration for the fgns art site)

The website gives an insight into the quilters and relationships as well as a catalogue of all the Quilts.

This also provides a nice introduction to the event/talk happening in the evening for those who would like to register.

Abstraction & Improvisation



Blocks, Strips and Strings

Mary Lee Bendolph

2006
Cotton
75 x 79 inches

Housetop & Bricklayer



"Housetop" Variation With Center Medallion

Loretta Pettway Bennett

2012-13
Corduroy, velveteen, cotton, and twill
80 x 77 inches

Patterns & Geometry



"Birds In Flight" Variation

Mertlene Perkins

1940s
Cotton
76 x 64 inches

SEARS CORDUROY



"Flower Garden"

Essie Bendolph Pettway

c.1975

Corduroy and cotton

87 x 66 inches

WORK CLOTHES



Medallion Work-Clothes Quilt

Lorraine Pettway

1974

Denim and Cotton/Polyester blend

84 x 68 inches

FILM SCREENING AND VIRTUAL TALK: THE AWARD-WINNING FILM *THE QUILTMAKERS OF GEE'S BEND* (2005) DIRECTED BY CELIA CAREY, WILL BE SCREENED ONLINE IN A WEEK-LONG EVENT FROM 11-18 JANUARY, LEADING UP TO A VIRTUAL TALK WITH LORETTA PETTWAY BENNETT AND MARY MARGARET PETTWAY IN CONVERSATION WITH RAINA LAMPKINS-FIELDER, CURATOR OF THE SOULS GROWN DEEP FOUNDATION ON TUESDAY 19 JANUARY, 6 - 7PM GMT.

<https://www.alisonjacquesgallery.com/exhibitions/192/overview/>