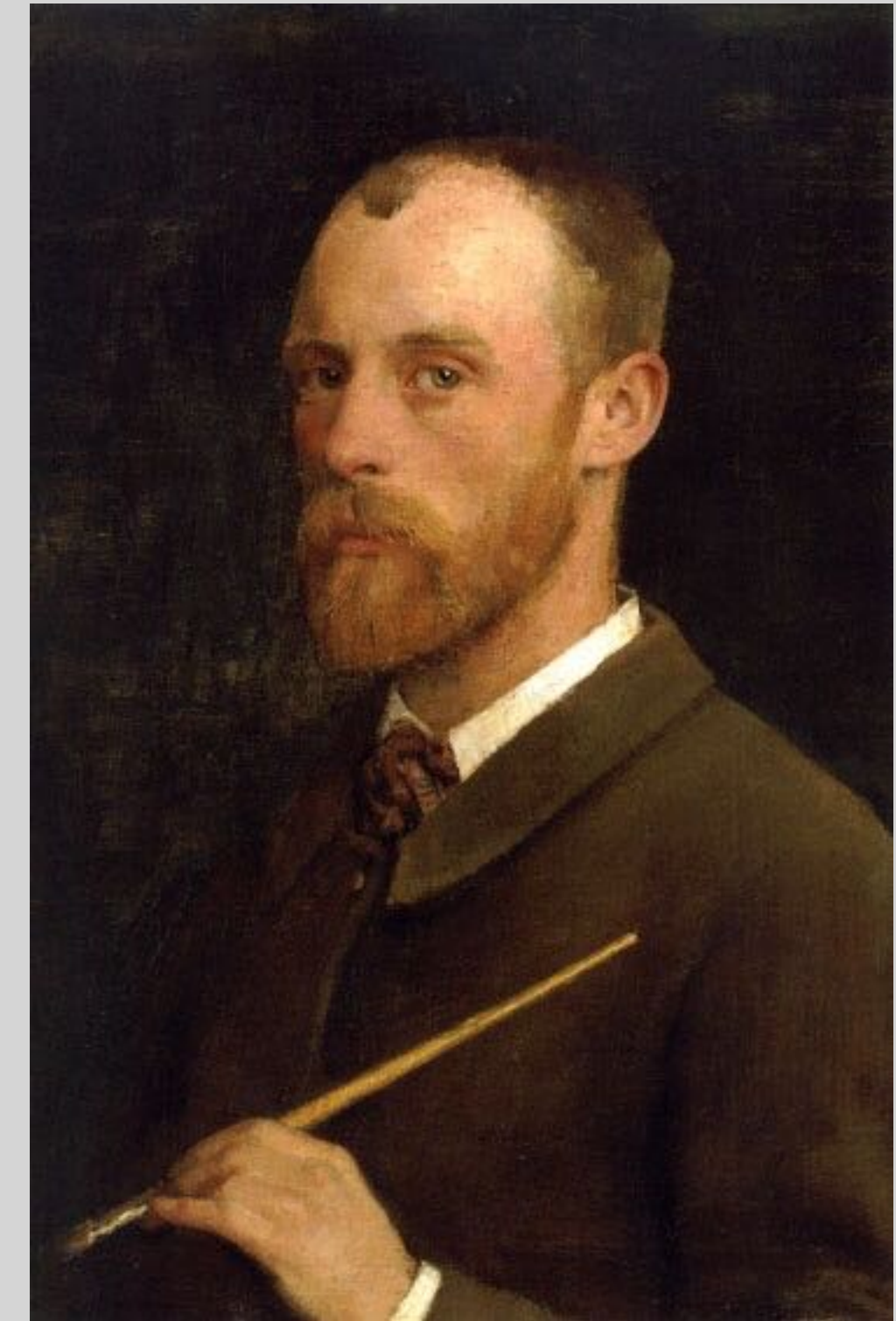


# Sir George Clausen

1852–1944



**Sir George Clausen** (London, 18 April 1852 – 22 November 1944) was a British artist working in oil and watercolour, etching, mezzotint, dry point and occasionally lithographs. He was knighted in 1927.

From 1867 to 1873, he attended the design classes at the South Kensington Schools in London with great success. He then worked in the studio of Edwin Long RA, and subsequently in Paris under Bouguereau and Tony Robert-Fleury at the Académie Julian.

Inspired by Naturalism, Clausen became one of the foremost modern painters of **landscape and of peasant life** and he shared the view that **light is the real subject of landscape** art like the Impressionists.

Following his marriage in 1881, he settled first in Berkshire and then in Essex where the surrounding scenery inspired much of his work. His Paintings show the appearance of things under flecking outdoor sunlight, or in the shady shelter of a barn or stable.

Clausen was a founding member of the New English Art Club in 1886. In 1895, he was elected an Associate of the Royal Academy, and a full Academician in 1906.

An official war artist in World War I, and one of those selected to paint a mural for St Stephen's Hall at Westminster, he was knighted for his services to art in 1927. Only a matter of months after his wife Agnes, he died at their son-in-law's home in Berkshire on 22 November 1944. They were survived by one of their two daughters, and all three of their sons.





Winter Work , 1883-4

Oil on Canvas

775 × 921 mm

In this picture he shows a family of field workers topping and tailing swedes for sheep fodder. It was painted at Chilwick Green near St Albans, where the artist had moved in 1881.





Normandy Peasant, 1887

Oil on Canvas

51.5 x 28 cms





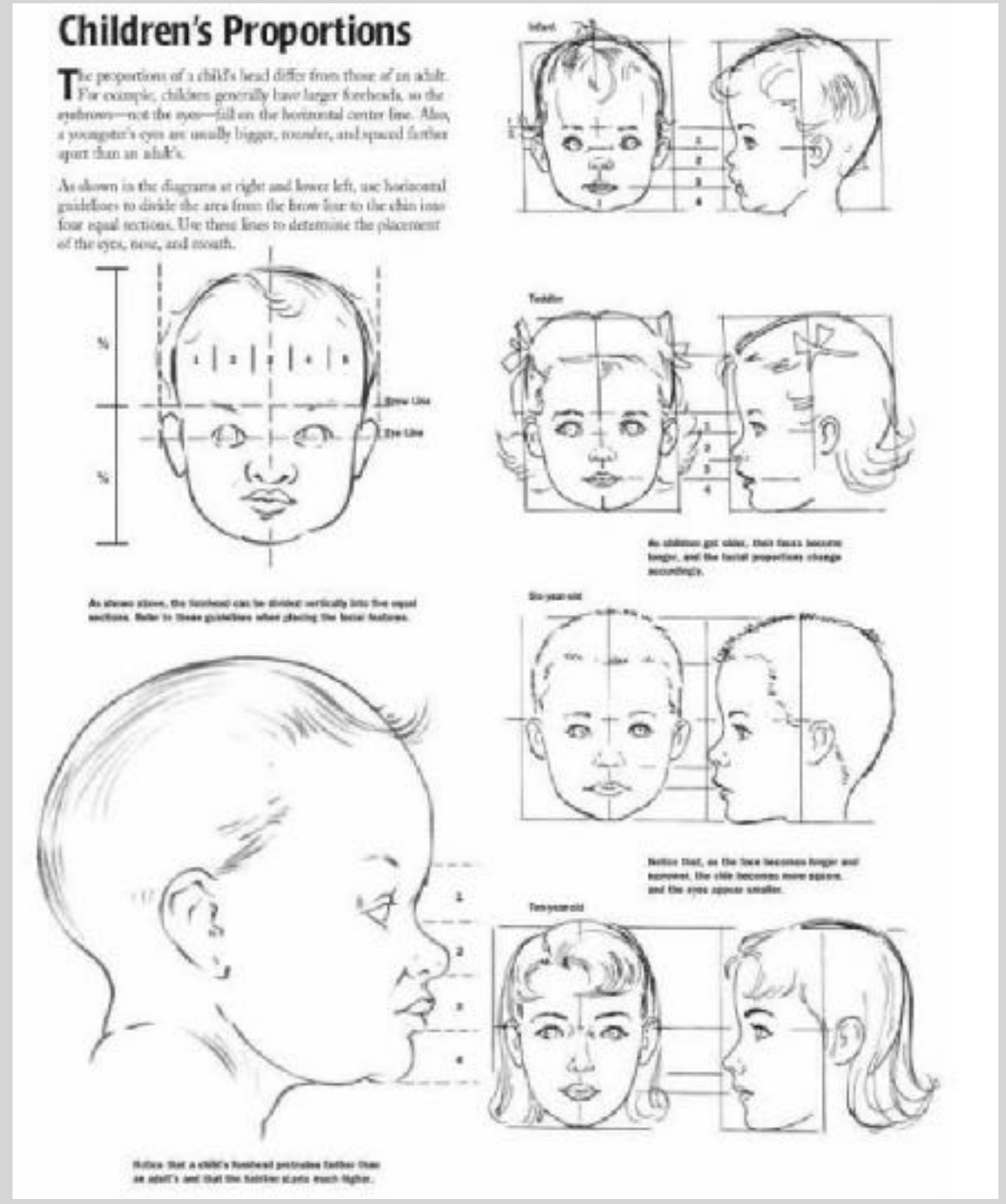
The Girl at the Gate, 1889

Oil on Canvas

1714 × 1384 mm

Clausen painted this picture in the village of Cookham Dean in Berkshire, where he lived. His model was Mary Baldwin, the Clausen family nanny. She was from the village and around 16 years old at the time





Brown Eyes, 1891

Oil on Canvas

559 × 413 mm

. This is a portrait of a local girl from the village of Cookham in Berkshire, where the artist was living.





A Frosty March Morning,

1904, Oil on Canvas

635 × 762 mm



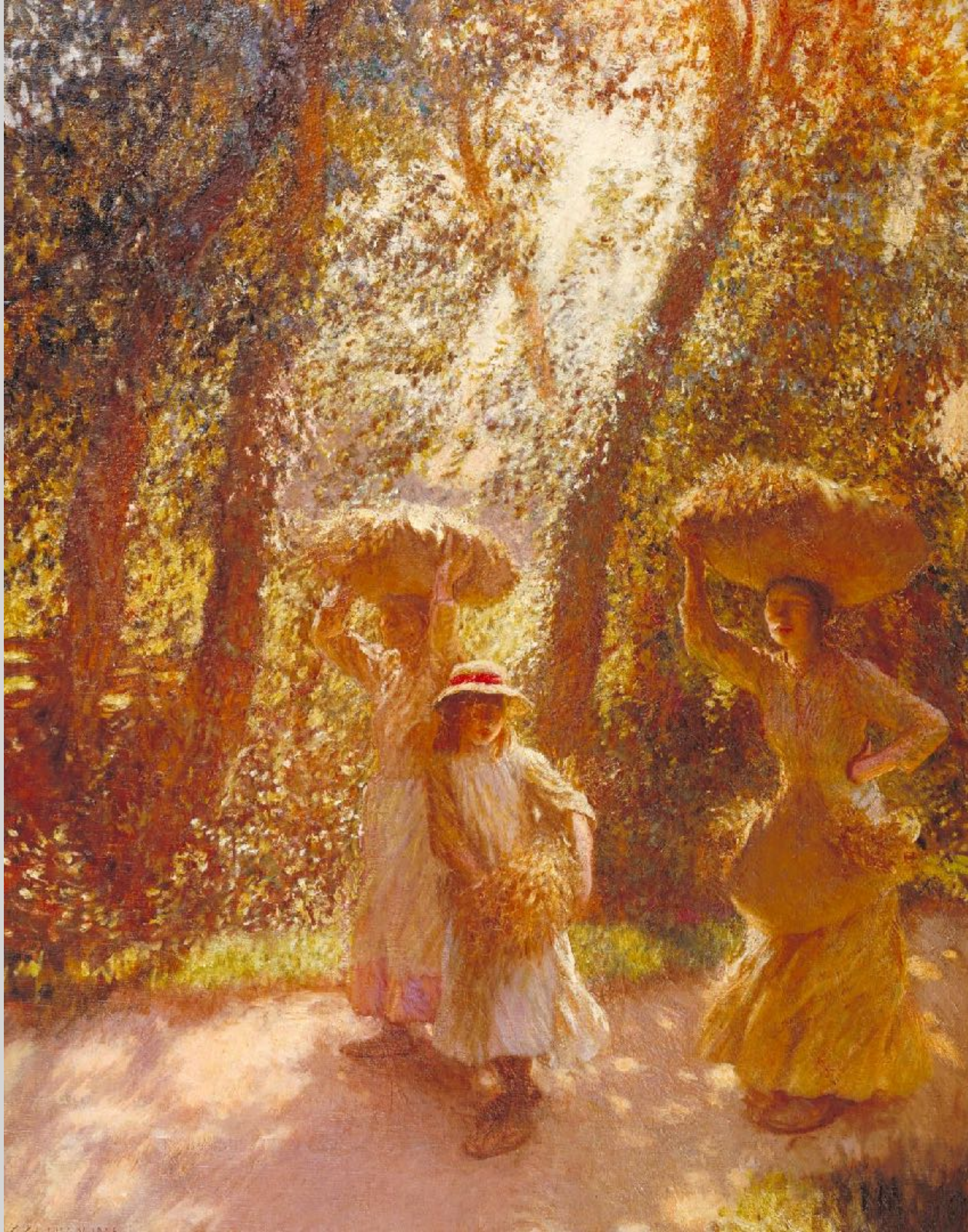


Winter Morning, 1906

Oil on Canvas

64.3 x 76.8cm





The Gleaners Returning, 1908

Oil on Canvas

838 × 660 mm





Marie, a peasant girl of Quimperlé

1922, Oil on Canvas

35 x 31.3cm





The Road, Winter Morning, 1923

Oil on Canvas

508 × 610 mm





My Back Garden, 1940

Oil on Canvas

508 × 610 mm