

**SNOW and SKI**  
**A selection of Landscapes**

**Peter Doig**

Blizzard '77  
Etching on paper  
197 x 119 mm



"I often paint scenes with snow because snow somehow has this effect of drawing you inwards and is frequently used to suggest retrospection and nostalgia and make-believe"



Peter Doig was born in Edinburgh, Scotland. In 1962 he moved with his family to Trinidad, where his father worked with a shipping and trading company, and then in 1966 to Canada. He moved to London to study at the Wimbledon School of Art in 1979–1980, Saint Martin's School of Art from 1980 to 1983, and Chelsea School of Art, in 1989–1990, where he received an MA.

Doig was invited to return to Trinidad in 2000, to take up an artist's residency with his friend and fellow painter Chris Ofili. In 2002, Doig moved back to the island, where he set up a studio at the Caribbean Contemporary Arts Centre near Port of Spain. He also became professor at the Fine Arts Academy in Düsseldorf, Germany.

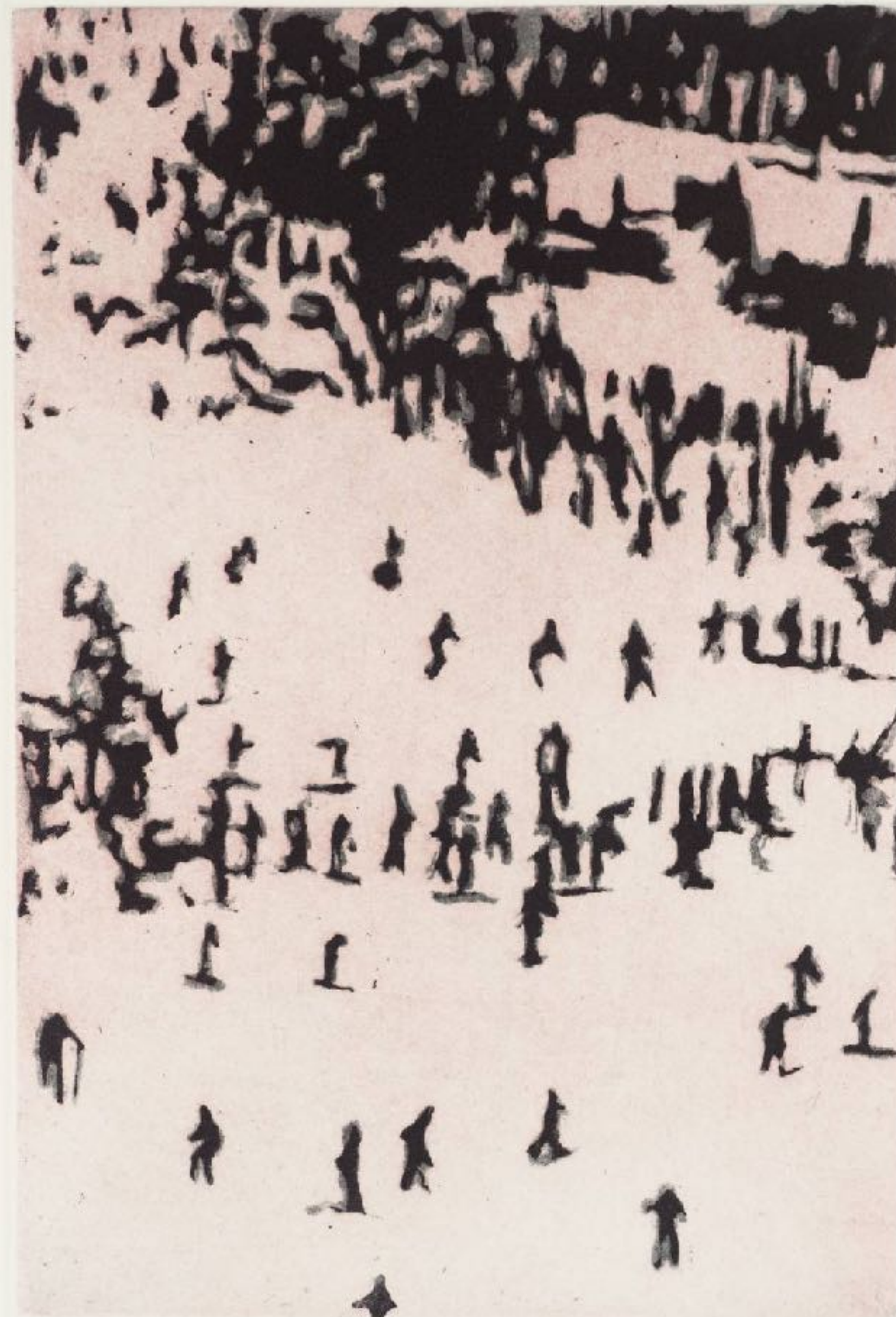
Many of Doig's paintings are landscapes, somewhat abstract, with a number harking back to the snowy scenes of his childhood in Canada. He draws inspiration for his figurative work from photographs, newspaper clippings, movie scenes, record album covers and the work of earlier artists.





III AP

Blizzard '77  
Etching on paper  
Image: 195 x 138 mm



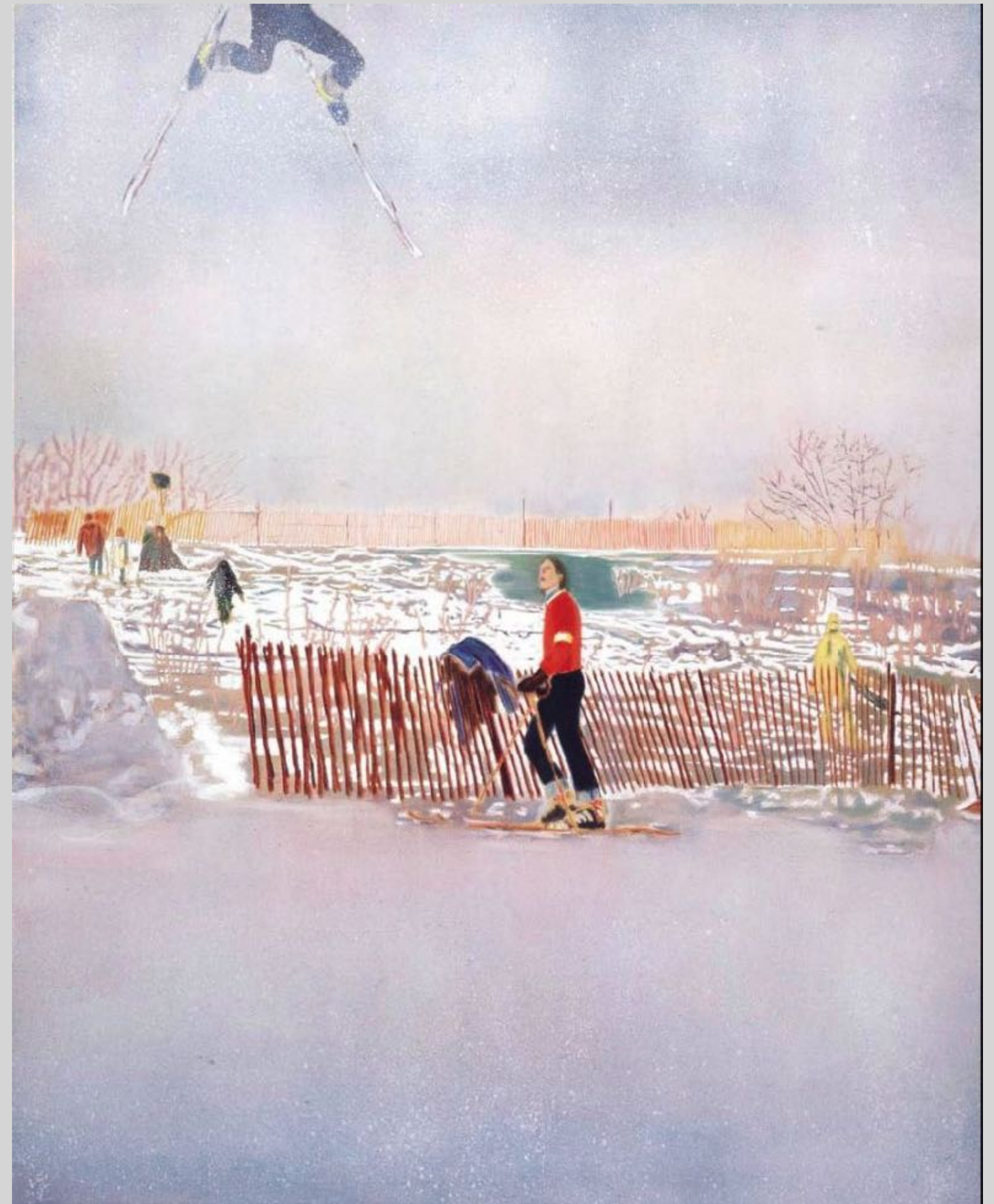
TC

Ten Etchings  
Etching and aquatint on paper  
Image: 220 x 150 mm





Olin MK IV Part 2, Oil on canvas. (290 x 200 cm.)



Olin MK IV, 1995-96, oil on canvas, 116 x 78".





Ski-Jacket  
oil on canvas





Ski jackets

Oil on Canvas

76.2 x 91.5 cm.





Ski Jacket, 1994

Oil on 2 canvas

right: 2953 × 1604 × 33 mm

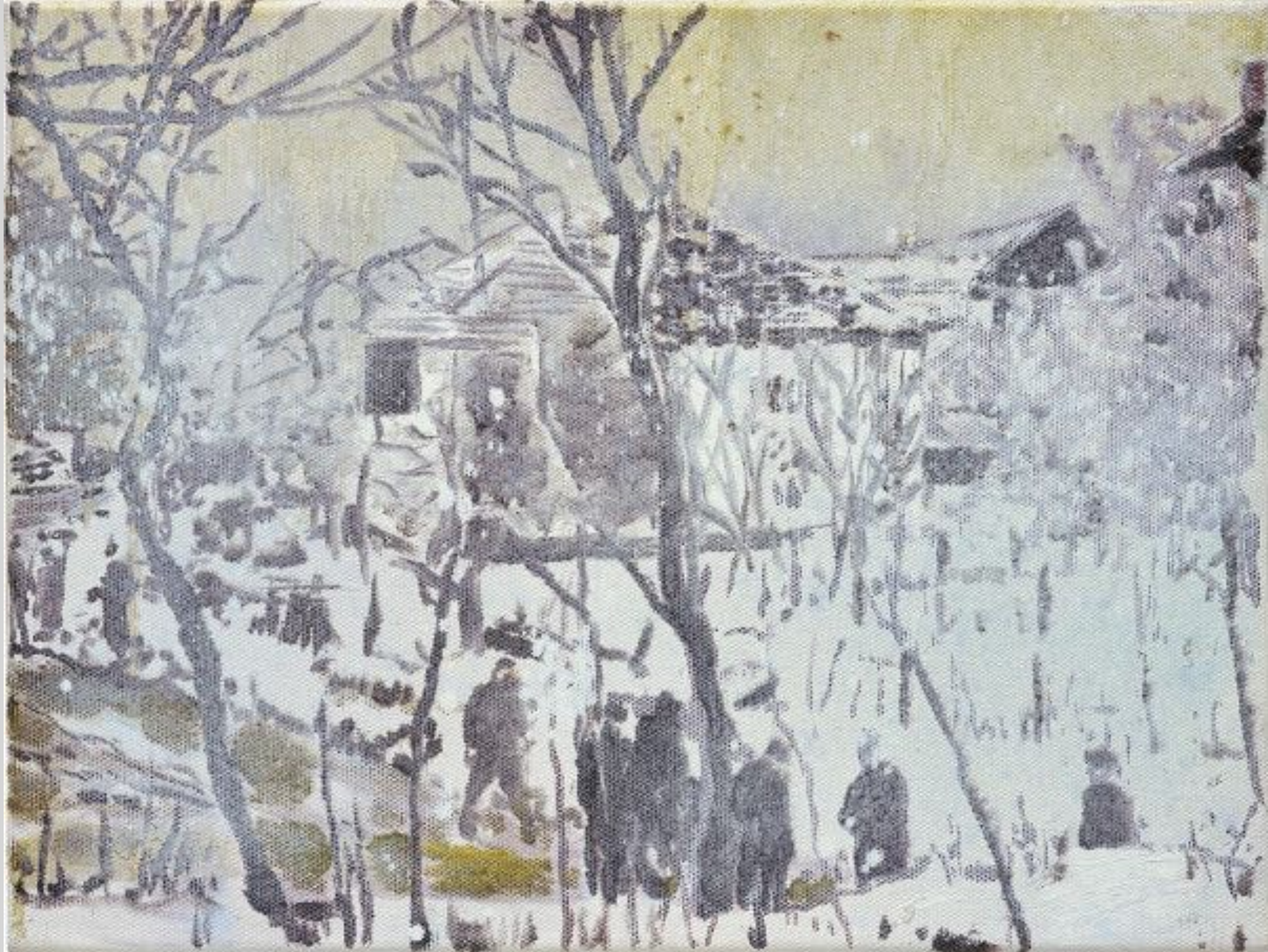
left: 2950 × 1900 × 33 mm





Tour de Charvet, 1995  
oil on canvas§  
150 x 130cm





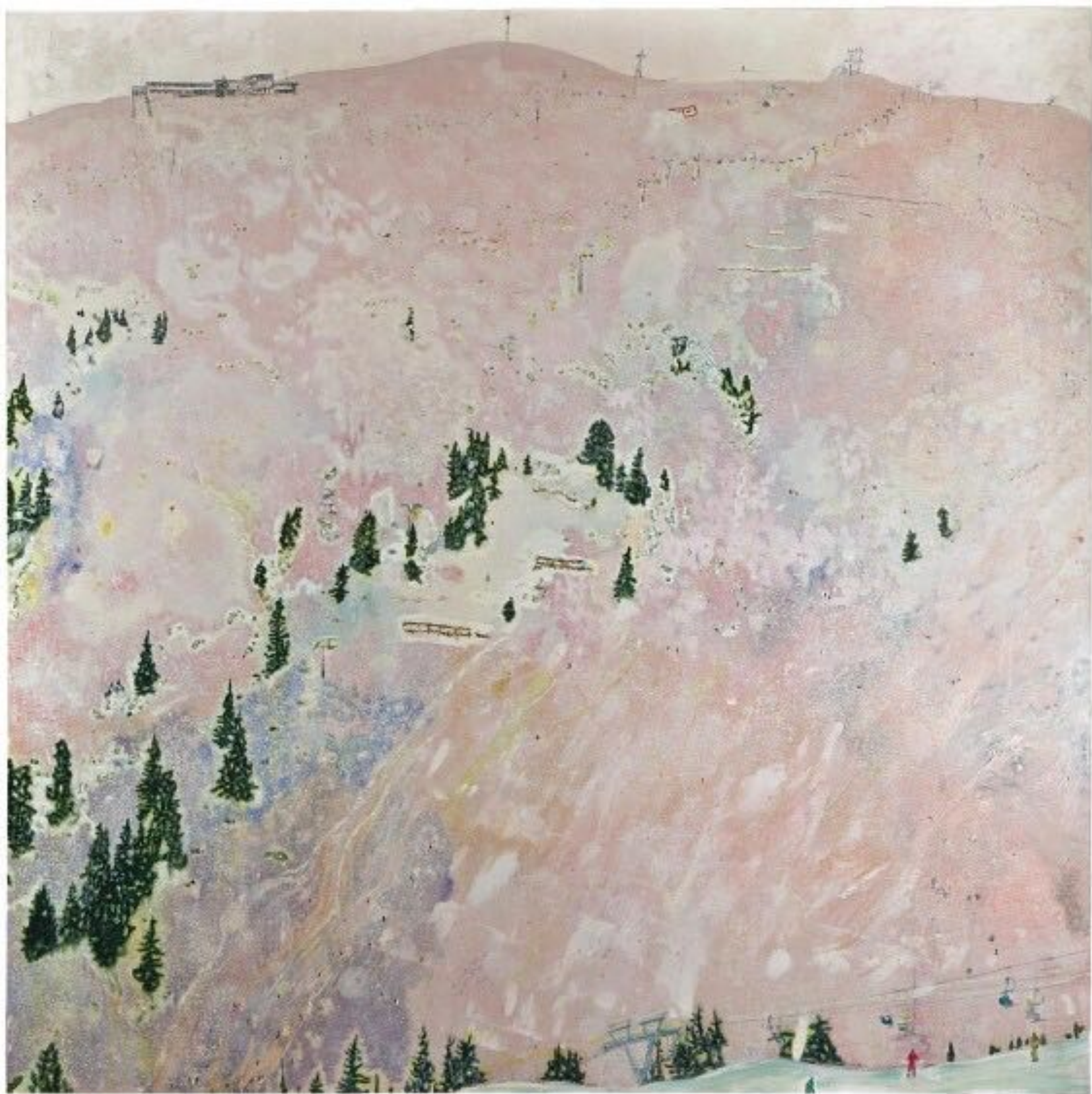
'SLUSHY LANDSCAPE' (WITH FIGURES)  
oil on canvas  
30.5 x 40.4 cm (12 x 15 7/8 in.)  
Painted in 1995.





*Untitled*  
1997  
paint, collage on paper  
22 5/8 x 28 1/2 in. (57.5 x 72.5 cm)





Saint Anton (Flat Light)

inscribed T Ski Valley on the reverse

oil on canvas





*Blue Mountain*

signed and dated 1996 on the reverse  
oil on canvas  
200 by 274.9 cm.



