



Artist: Claude Monet

1840-1926

MONET'S GARDEN

‘You never have the same Light’

“Almost like walking back into a Dream”

“Layers and Layers of colours and reflection”

“Every artist’s Personal Slant and mystery’

‘The Landscape of reflection’

‘Nature not popular because its not intellectual’

The Gift of Second Sight’

<https://www.facebook.com/royalacademy/videos/271469880548310/>

<https://www.youtube.com/watch?v=nhUvl7HOnjl>

THE SURFACES

PALETTES OF COLOURS: HE SAW COLOURS AS A KIND OF LIGHT THAT SURROUNDED THE PLANT. IT WAS NOT STATIC....IT HAD A KIND OF MOBILITY.

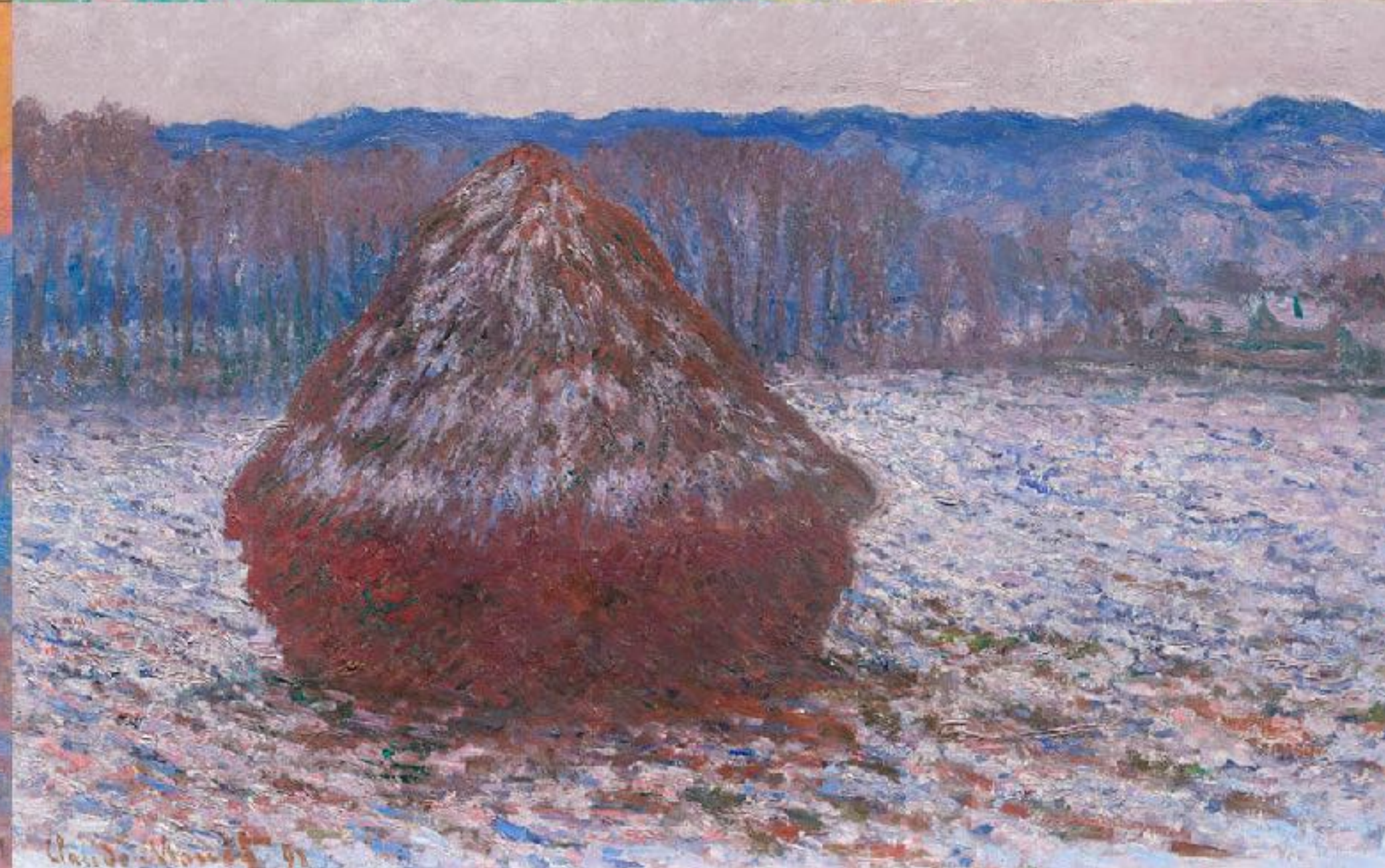
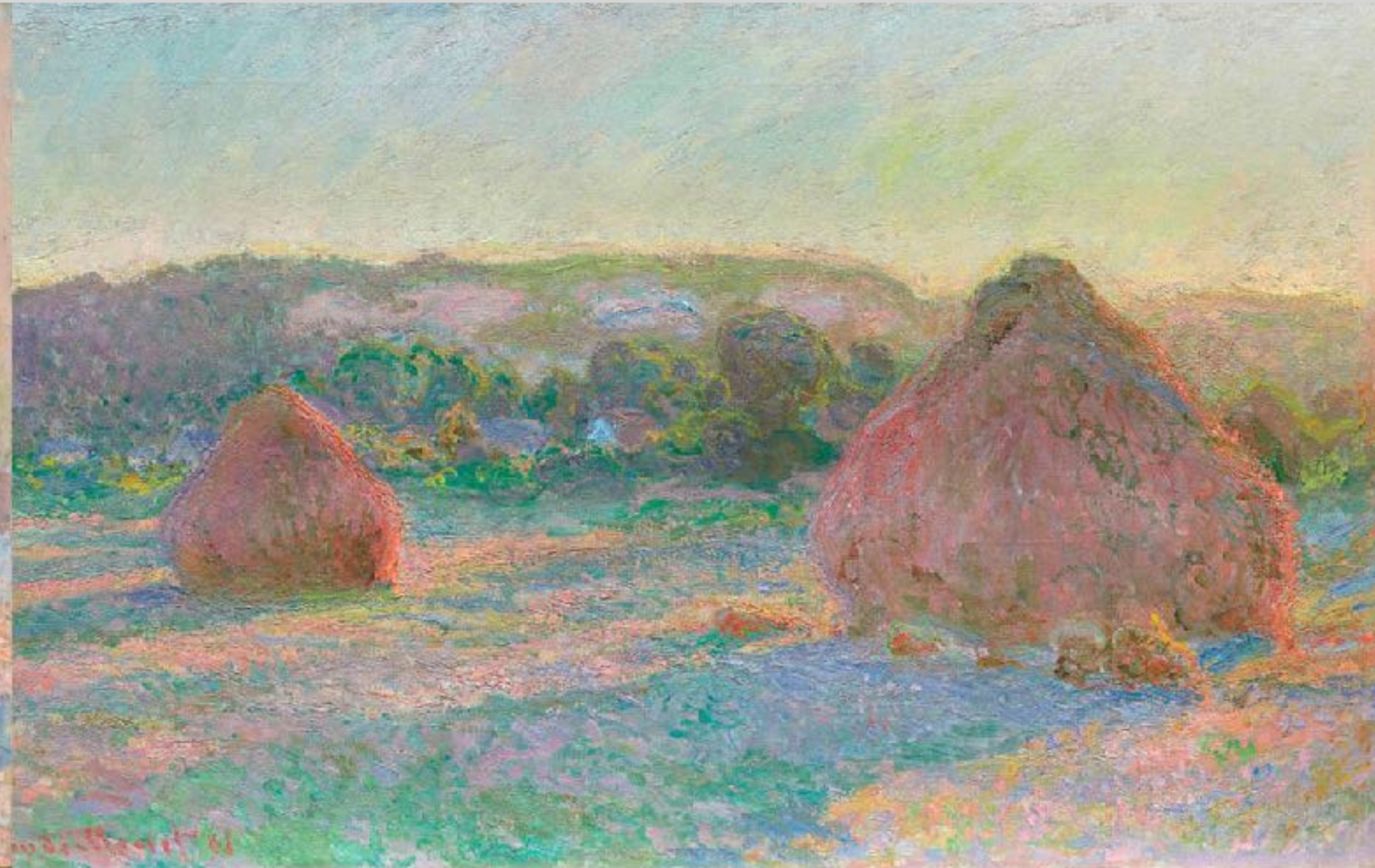
HE WAS NOT SEEING THE JUST THE OBJECTLIKE BEING ENVELOPED IN LIGHT AND COLOUR

A pochade (from French poche, pocket) is a type of sketch used in painting.....
a pochade captures the colours and atmosphere of a scene.





Lavacourt under Snow. 1881



Clockwise: Wheat stacks, Snow Effect, Morning, 1891, Claude Monet. Oil on canvas, 25 1/2 x 39 1/2 in. J. Paul Getty Museum, 95.PA.63. Stacks of Wheat (End of Summer), 1890-1891, Claude Monet. Oil on canvas, 23 5/8 x 39 9/16 in. Art Institute of Chicago, 1985.1103. Stacks of Wheat (Sunset, Snow Effect), 1890-1891, Claude Monet. Oil on canvas, 25 11/16 x 39 1/2 in. Art Institute of Chicago, 1922.43. Stack of Wheat, 1890-1891, Claude Monet. Oil on canvas, 25 15/16 x 36 3/8 in. Art Institute of Chicago, 1983.29.



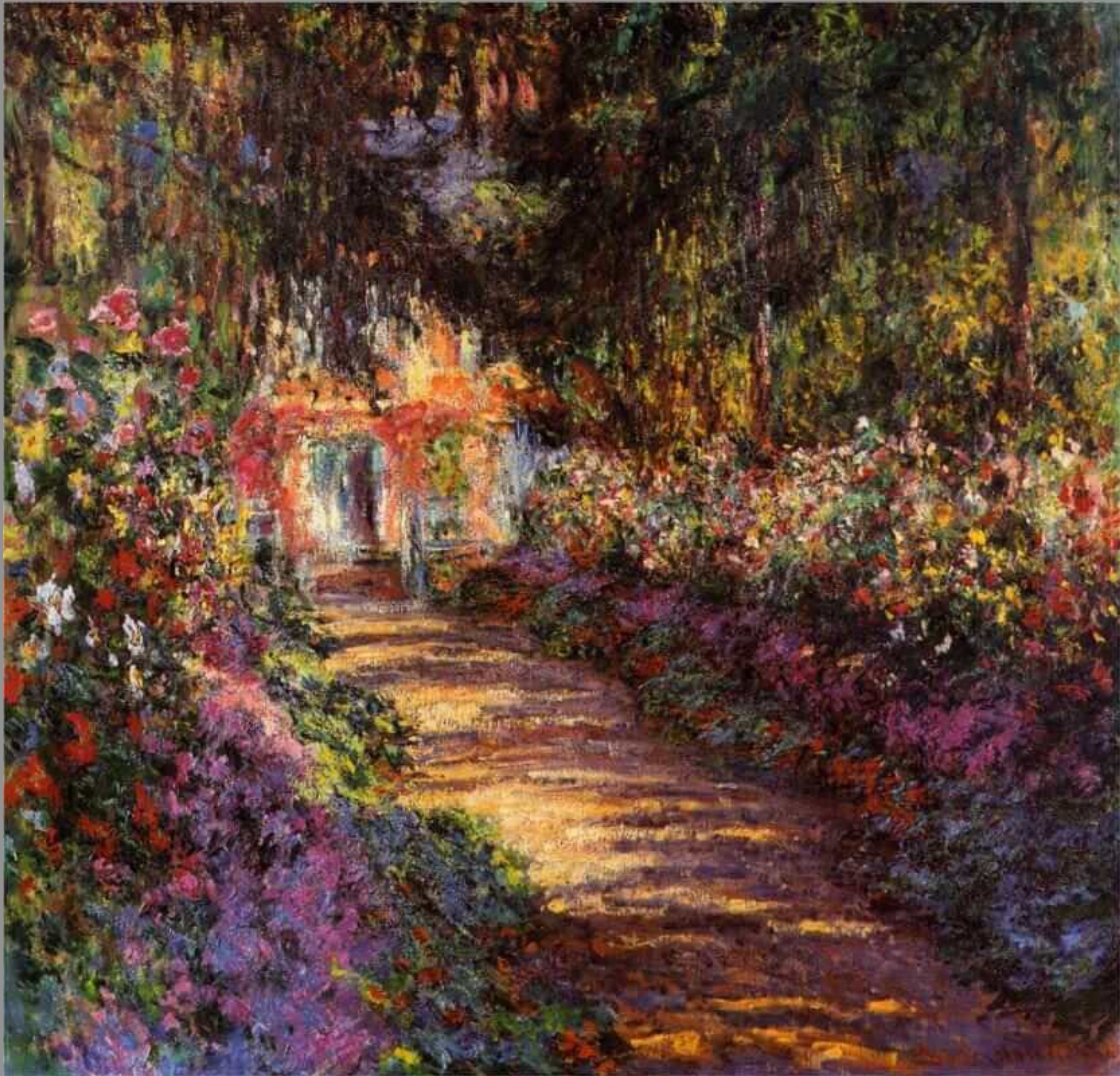
Chrysanthemums - 1890

HIS IDEAS AND INSPIRATION TAKEN
FROM JAPANESE
WOODCUTS AND PAINTINGS
WHICH HE COLLECTED.
CALM COLOURS, MISTY AND MILKY





The Artist's Garden at Giverny, 1900



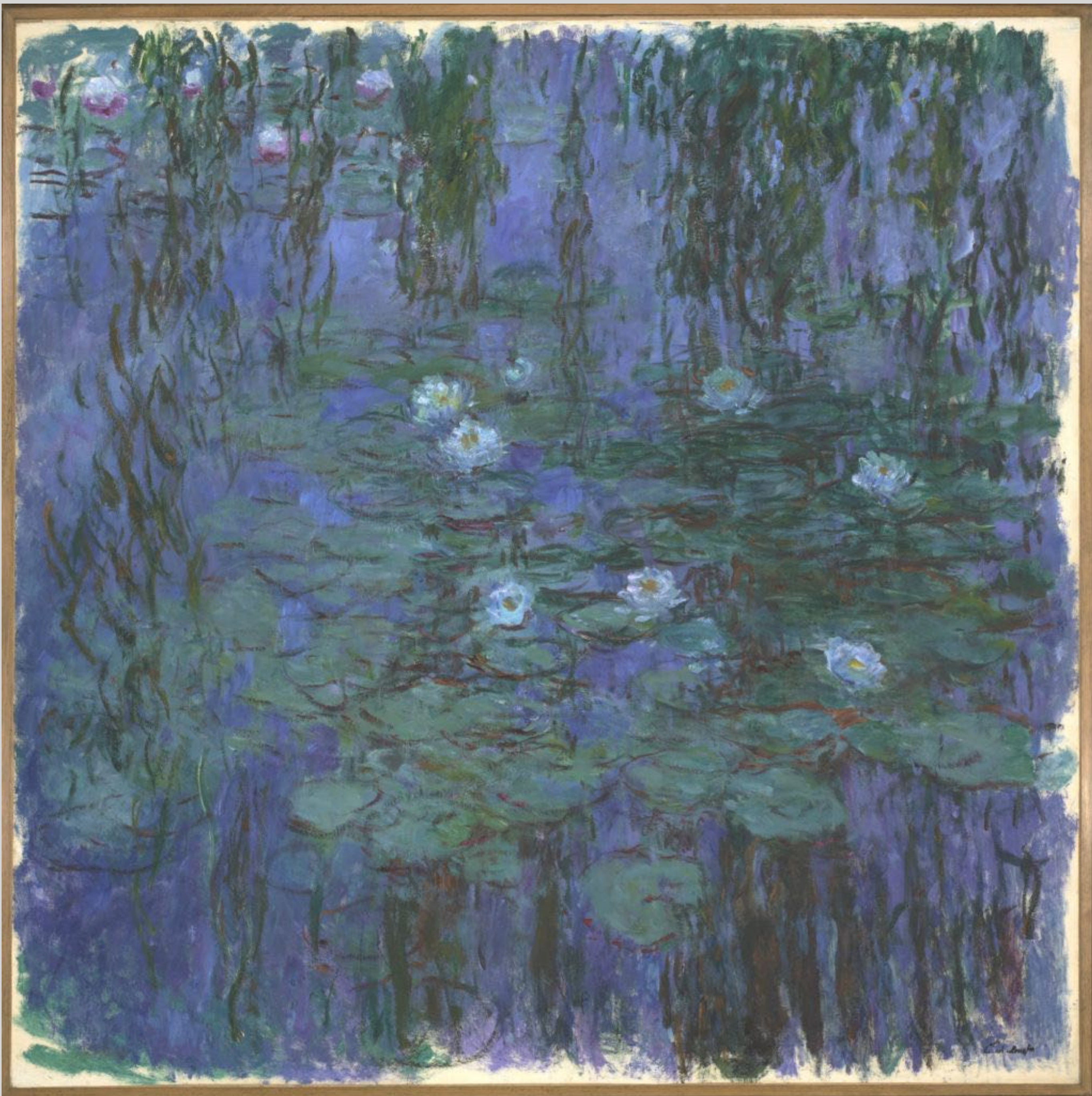
Garden Path at Giverny, 1902



Irises

This is one of approximately 20 views of irises surrounding the banks of the lily pond that Monet painted around 1914–17.

It is as though we are standing on the Japanese bridge and looking down at the winding path bordered by flowers.



Claude Monet, Nymphéas bleus
(1916-19)



Agapanthus
1914-26



<https://www.claude-monet.com/waterlilies.jsp>



Harmony in Blue, 1917



Water-Lilies

frame: 2060 × 4320 × 75 mm



The Japanese Footbridge is among Monet's last paintings of this subject, made between 1920 and 1922. Twenty-five years earlier, in the late 1890s, the footbridge provided the subject of Monet's first series of paintings of his pond at Giverny.

The Japanese Footbridge
c. 1920-22





Structural Elements and Features - the parts that do not change so much



The dancing light marks over and around



The darker deeper areas of colour underneath



The constant moving and changing, evolving and developing aspects