

Milton Avery **Painter**

1885 NY - 1965 NY

The son of a tanner, Avery began working at a local factory at the age of 16 and supported himself for decades with a succession of blue-collar jobs. The death of his brother-in-law in 1915 left Avery, as the sole remaining adult male in his household, responsible for the support of nine female relatives. His interest in art led him to attend classes at the Connecticut League of Art Students in Hartford, and over a period of years, he painted in obscurity while receiving a conservative art education. In 1917, he began working night jobs in order to paint in the daytime.

In 1924, he met Sally Michel, a young art student, and in 1926, they married. Her income as an illustrator enabled him to devote himself more fully to painting. They had a daughter, March Avery, in 1932.

Avery's work is seminal to American abstract painting—while his work is clearly representational, it focuses on colour relations and is not concerned with creating the illusion of depth as most conventional Western painting since the Renaissance has. Avery was often thought of as an American Matisse, especially because of his colourful and innovative landscape paintings.

Hoxton Radio

<https://www.youtube.com/watch?v=Viveh0zOZF0>

“WHY TALK WHEN YOU CAN PAINT”



Sails in Sunset Sea, 1960

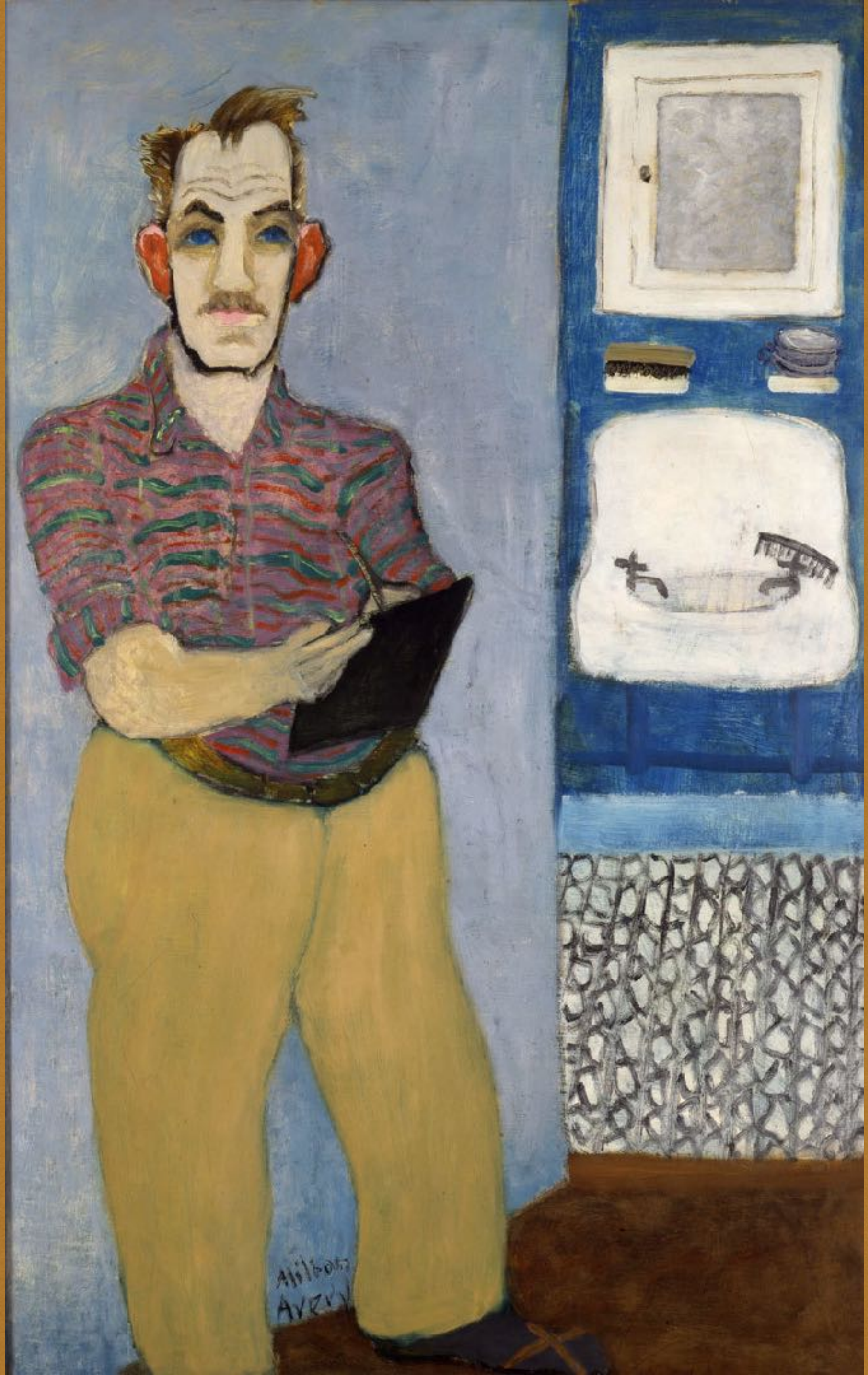
Oil on canvas. 182.9 x 132 cm.





Boathouse by the Sea, 1959.

Oil on canvas. 182.9 x 152.4 cm.



Self-Portrait, 1941.

Oil on canvas. 137.2 x 86.4 cm.



Two Figures on Beach,
1950.

Oil on canvas. 76.2 x
101.6 cm.



March in Brown, 1954.

Oil on canvas. 111.8 x 81.3 cm



Beach Blankets, 1960.

Oil on canvas. 136.2 x
181.9 cm.



Yellow sky, 1958

Oil Paint on Canvas

1562 × 1841 mm