

Matthew Krishanu

1980, Bradford



What is the difference between a 'sketch' and a 'finished' work?

Some artists sketches stand alone as a finished work. They are usually created in a period of research or simple observational study.

The mostly Brown figures who occupy Krishanu's compositions—Indian and Bangladeshi children, in the main—reflect the artist's own biography, namely the first eleven years of his life, which were spent in Dhaka, Bangladesh, and included visits to West Bengal, India. Bornto an Indian mother and a White, English father, Krishanu generates his paintings from this formative period, which made him aware of people

“not just as individuals, but also as very specific cultural groupings.”

https://www.matthewkrishanu.com/img/t/txt_22.pdf



Boat
2021
Oil on canvas
45 x 60cm

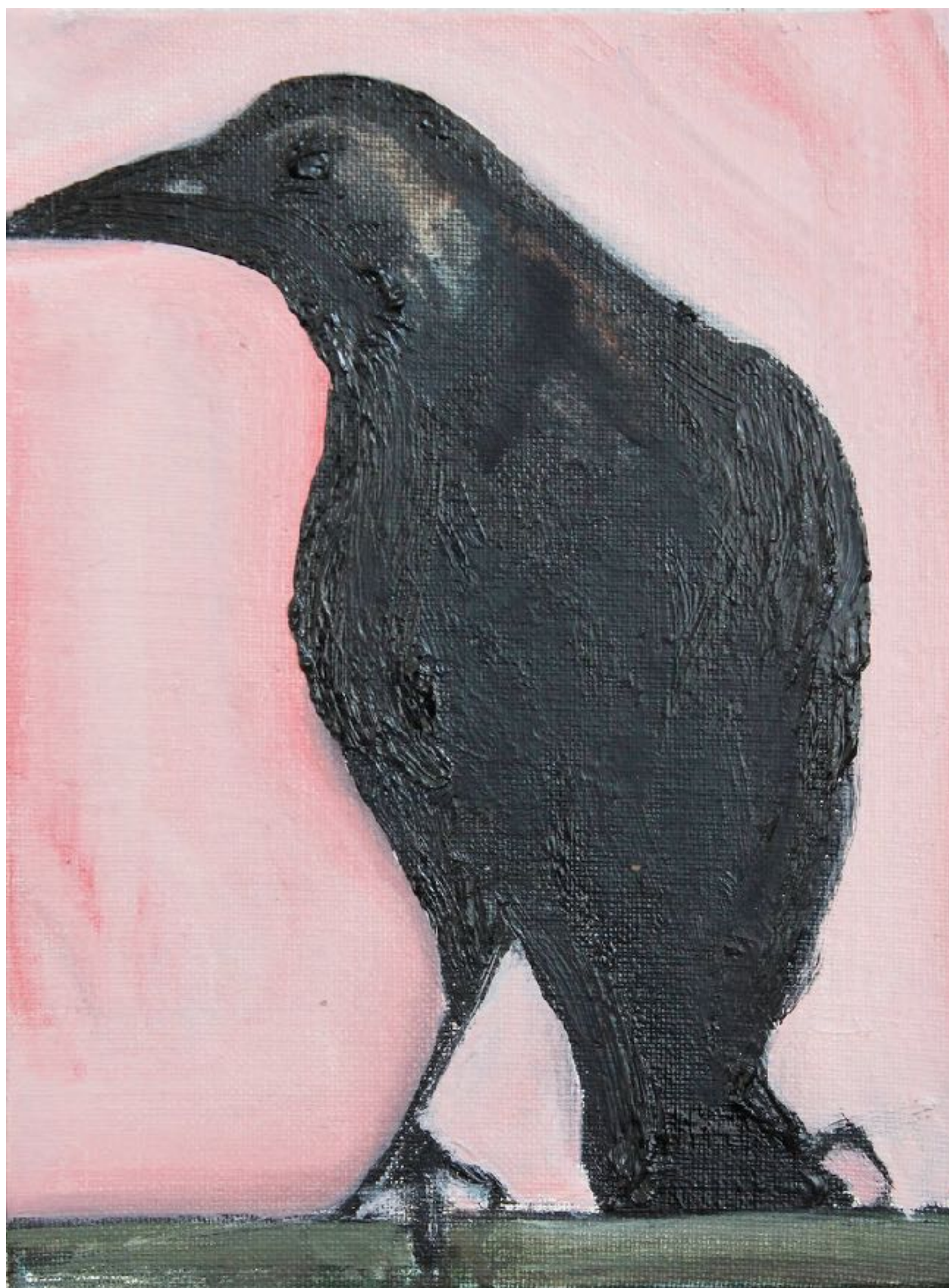


Boat

2014

Watercolour on paper

25 x 35cm



Crow (Mumbai, pink)

2019

Oil on board

20 x 15cm



Crow (turning)

2019

Oil on board

20 x 15cm

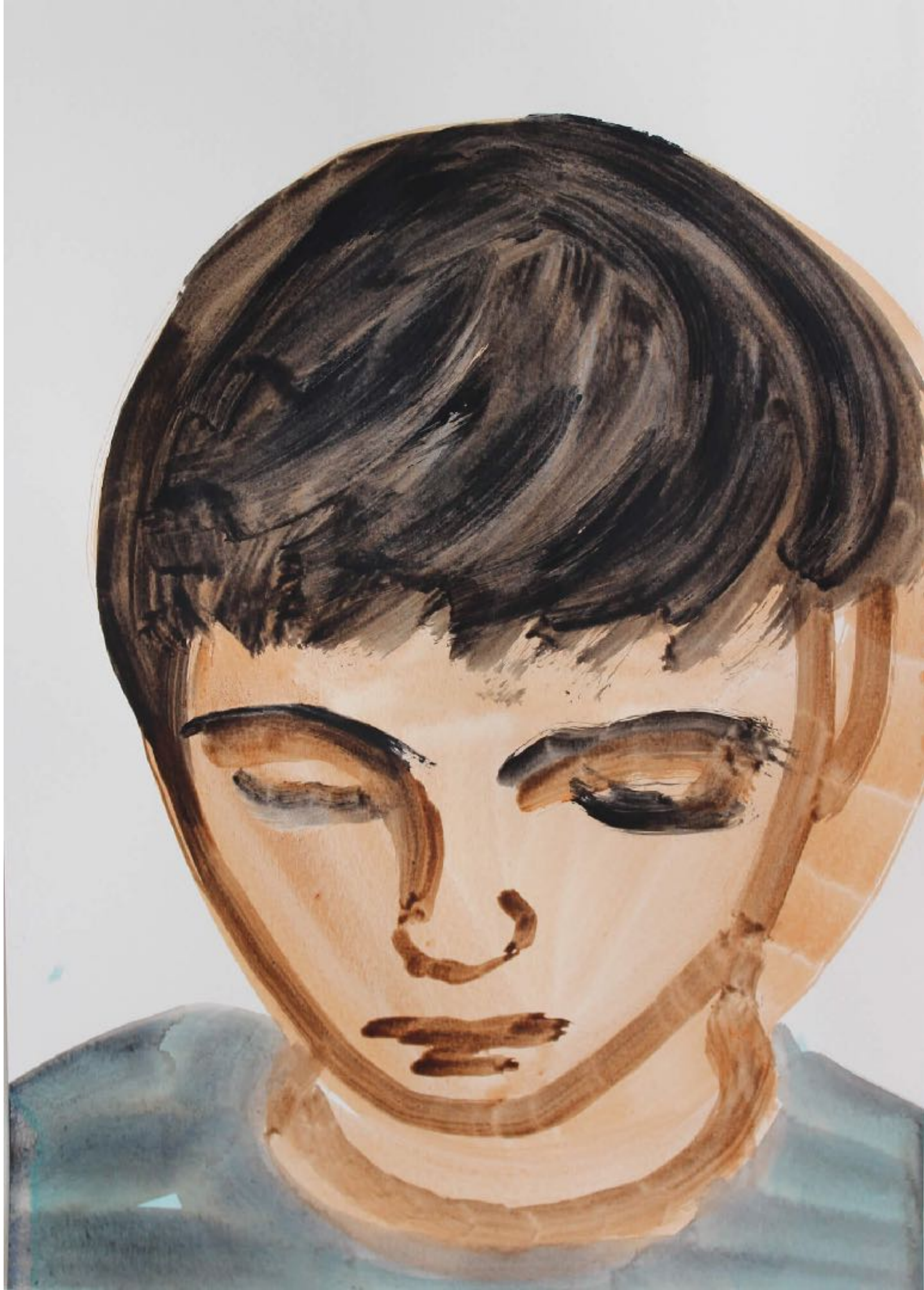


Crows

2011

Watercolour on paper

15 x 21cm

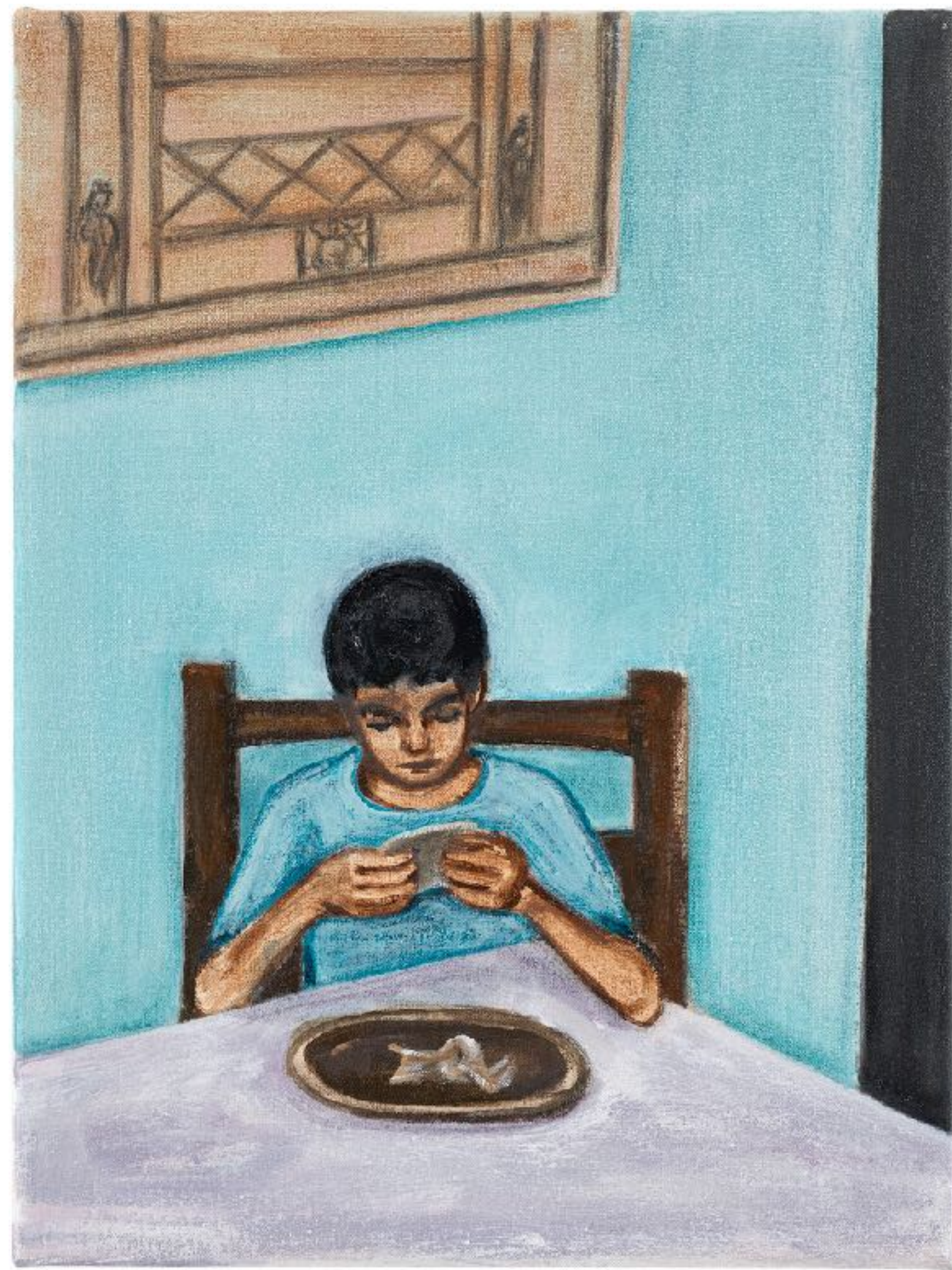


Boy (looking down)

2021

Acrylic on paper

42 x 30cm



Boy at Table

2022

Oil on canvas

40 x 30cm



Banyan 1

2015

Indian ink on paper

84 x 59cm

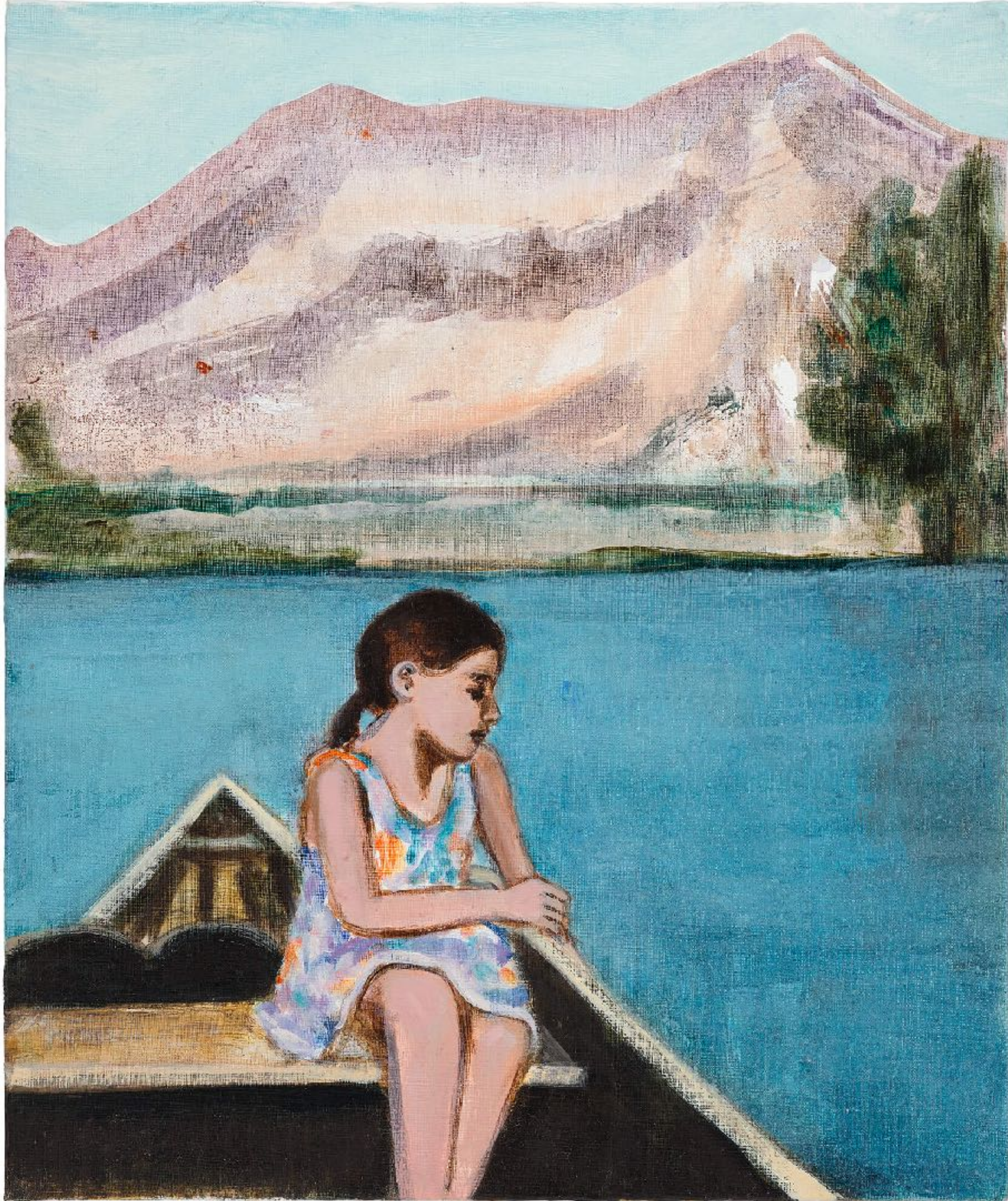


Banyan 6

2015

Indian ink and gouache on
paper

84 x 59cm



Girl in Boat (Kashmir)

2021

Acrylic and oil on board

30 x 25cm

Boy in Dungarees, 2009, Ink on Paper





"The Artist and the Model"