

MAHA AHMED

b.1989 Pakistan Lives and works in Dubai



Detail: They lie among us, 2019

Drawing on feelings of **isolation and wonder**, Ahmed depicts the experience of identity as it is constructed and re-constructed through the narratives of others. Her intricate, otherworldly visions of **fantastical creatures and distant worlds** offer a poignant reflection on her personal feelings of unfamiliarity during a period of living and working in Tokyo. **Ahmed dreams up imaginary worlds in which her characters - often mythical or hybrid creatures** - are in some way at odds from their surroundings. The worlds are as beautiful as they are potentially frightening, tackling the complex emotions we might experience in relation to the unknown, such as loneliness, claustrophobia, or liberation and belonging. Ultimately, the viewer is left to interpret the narratives through their own internal experiences and feelings.

FISH-BOWL I, 2020

Gouache on paper

Painting size

21 x 19 cm

8 1/4 x 7 1/2 in

Framed size

42 x 30 cm

16 1/2 x 11 3/4 in



MAHA AHMED

SILENCE YOUR DEMONS, 2020

Gouache on paper

22 x 14 cm

8 5/8 x 5 1/2 in



MAHA AHMED

OF A WHOLE, 2020
Coffee stain on paper
51 x 36 cm
20 1/8 x 14 1/8 in



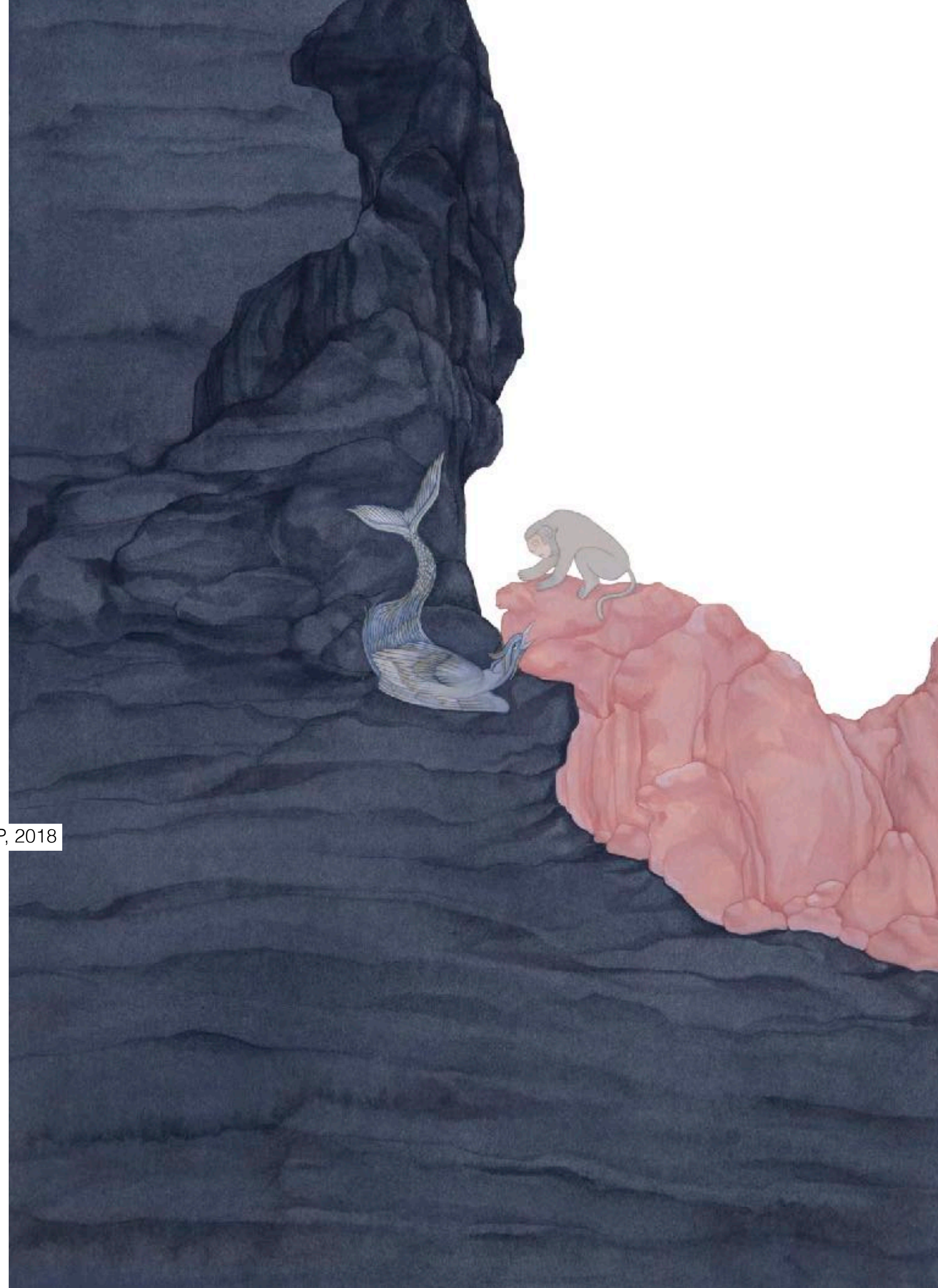
MAHA AHMED

AN ISLAND OF TRUTH, 2018
Gouache on paper
51 x 36 cm
20 1/8 x 14 1/8 in



MAHA AHMED

AN UNLIKELY FRIENDSHIP, 2018
Gouache on paper
28.5 x 21 cm
11 1/4 x 8 1/4 in



[Open a larger version of the following image in a popup:](#)

MAHA AHMED

NOISE OF SOLITUDE , 2020

Gouache on paper

Painting Size:

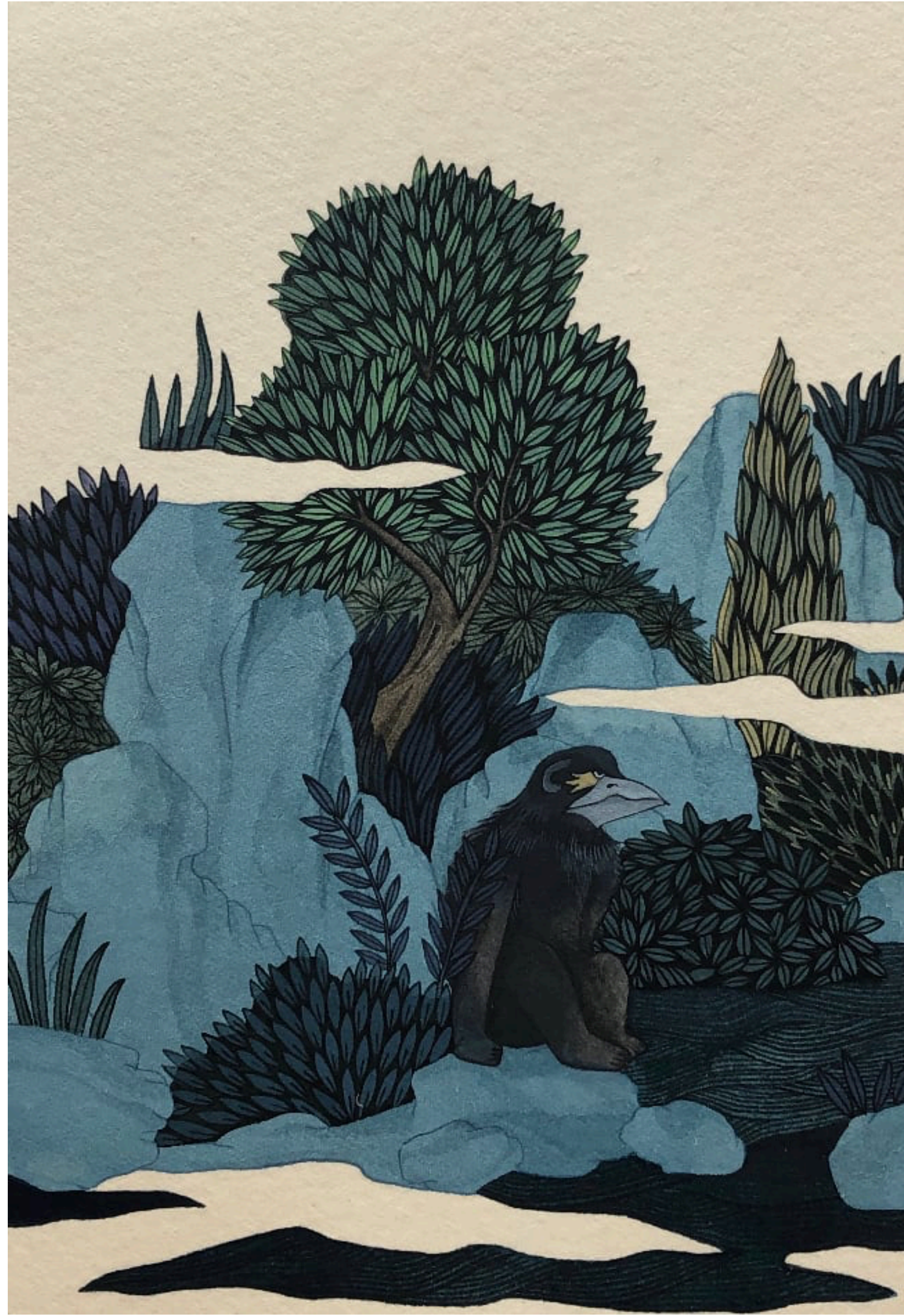
15 x 10 cm

5 7/8 x 4 in

Framed Size:

42 x 30 cm

16 1/2 x 11 3/4 in



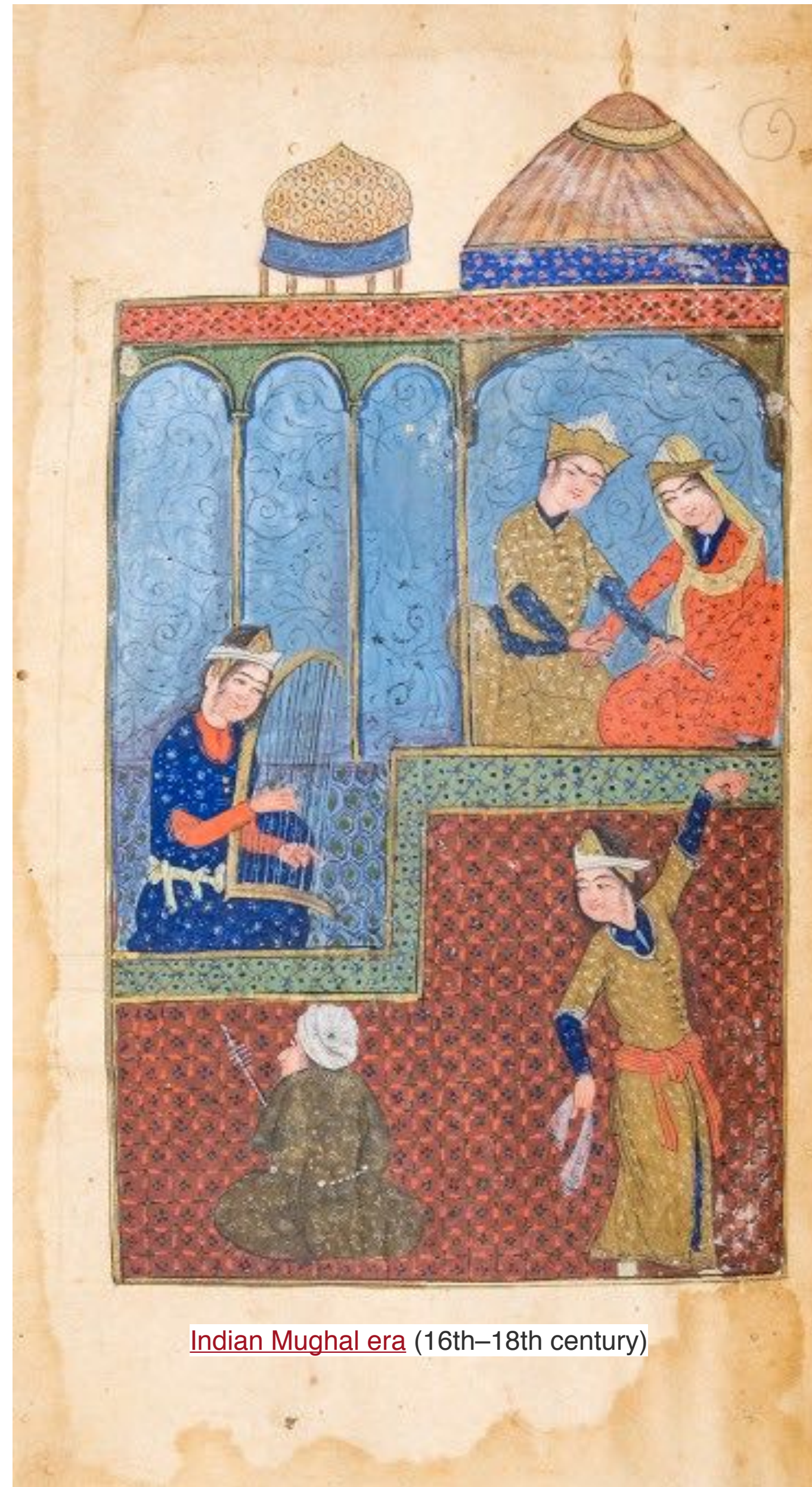


Classical Japanese Painting Techniques:

<https://www.youtube.com/watch?v=wX8yRYGzSi8>

<https://www.youtube.com/watch?v=qrURKrkSs9U>

Her works draw inspiration from traditional Persian and Mughal manuscripts and classical Japanese painting techniques.



Indian Mughal era (16th–18th century)

<https://www.youtube.com/watch?v=WO9lkkjQhso>



Govardhan, Emperor Jahangir visiting the ascetic Jadrup, c. 1616–20

LINKS:

Classical Japanese Painting Techniques:

<https://www.youtube.com/watch?v=wX8yRYGzSi8>

<https://www.youtube.com/watch?v=qrURKrkSs9U>

<https://www.youtube.com/watch?v=WO9lkkjQhso>

<https://www.rct.uk/collection/themes/exhibitions/splendours-of-the-subcontinent-four-centuries-of-south-asian-paintings/the-padshahnama-book-of-emperors-of-abd-al-hamid-lahori>

<https://circulatingnow.nlm.nih.gov/2016/05/05/a-mughal-era-manuscript-curiously-illustrated/>

<https://kristinhjellegjerde.com/artists/148-maha-ahmed/overview/>