

Lubaina Himid

(born 1954)

“Himid was one of the first artists involved in the UK's Black Art movement in the 1980s and continues to create activist art which is shown in galleries in Britain, as well as worldwide. Himid was appointed MBE in June 2010 "for services to Black Women's Art", won the Turner Prize in 2017 and was promoted to CBE in the 2018 Queen's Birthday Honours "for services to Art.”

(wiki)

Himid was born in Zanzibar Sultanate (then a British protectorate, now part of Tanzania) in 1954 and moved to Britain with her mother, a textile designer,^[10] following the death of her father when she was just four months old.

She attended the Wimbledon College of Art, where she studied Theatre Design, obtaining her B.A. in 1976. She received her master's degree in Cultural History from the Royal College of Art in London in 1984

“Himid was one of the first artists involved in the UK's Black Art movement in the 1980s and continues to create activist art which is shown in galleries in Britain, as well as worldwide. Himid was appointed MBE in June 2010 "for services to Black Women's Art", won the Turner Prize in 2017 and was promoted to CBE in the 2018 Queen's Birthday Honours "for services to Art.”

(wiki)

<https://www.tate.org.uk/art/artists/lubaina-himid-2356/lubaina-himid-conversation>



Frieze Sculpture 2020, Regent's Park - in pictures



Man in a Shirt Drawer,
2017-8

Acrylic paint, wooden drawer
and brass handles



Six Tailors 2019



Stir Until Melted (The Fortune Teller) 2020
Acrylic paint on canvas, 183 × 122 cm



A Fashionable Marriage (1984-86) is among the exhibits at the Tate Modern's retrospective

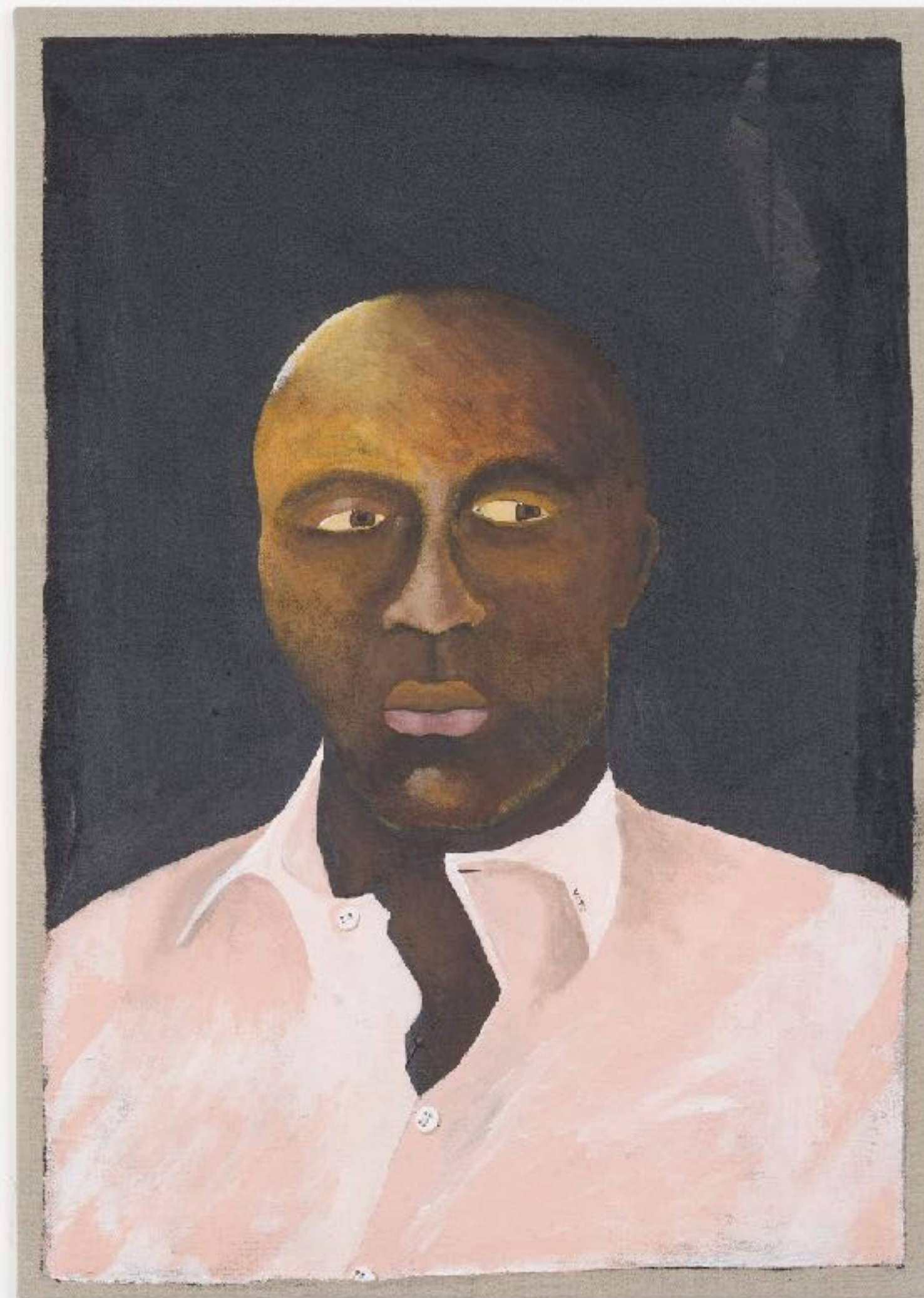
Himid's installation *A Fashionable Marriage*, 1986, is based on British artist William Hogarth's 1734 satirical work *Marriage a la Mode*, which attempted to expose the greed, fashionable excesses and exploitation of affluent 18th century London life.



The Operating Table, 2019, acrylic on canvas, 152 x 152 cm



1974, 2015, acrylic on canvas, 64 x 45.3 x 2 cm



2015, 2015, acrylic on canvas, 64.1 x 45.6 x 2 cm



The Carrot Piece, 1985, acrylic on wood, card, string, 243 x 335 cm



Drowned Orchard: Secret Boatyard, 2014, 16 hand-painted wooden planks



<https://lubainahimid.uk/portfolio/jelly-pavilions/>