

# **GEORGIA O'KEEFFE**

**Wisconsin, USA 1887 - 1986 Santa Fe, Mexico**



Jimson Weed/White Flower No. 1 1932



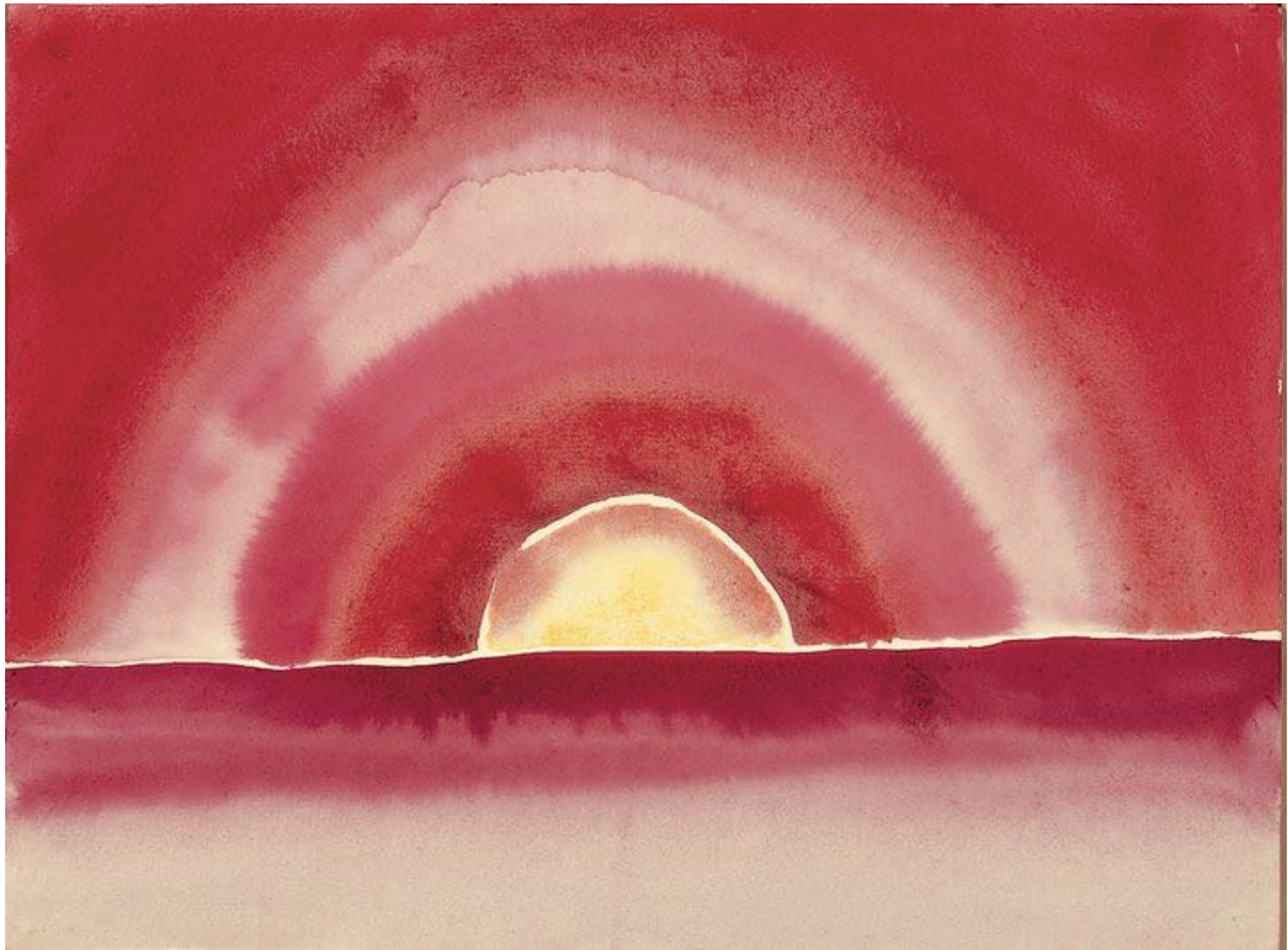
*I decided I was going to begin to make drawings. I thought, well, I have a few things in my head that I never thought of putting down, that nobody else taught me, and I was going to begin with charcoal, and I wasn't going to use any colour until I couldn't do what I wanted to do with the charcoal or black paint.<sup>1</sup>*

Georgia O'Keeffe, *No. 12 Special* 1916, charcoal on paper, 61 x 48.3 cm



*I was busy in the daytime and I made most of these drawings at night. I sat on the floor and worked against the closet door. Eyes can see shapes. It's as if my mind creates shapes that I don't know about. I get this shape in my head and sometimes I know what it comes from and sometimes I don't. And I think with myself that there are a few shapes that I have repeated a number of times during my life and I haven't known I was repeating them until after I had done it.<sup>1</sup>*

Georgia O'Keeffe, *Blue I* 1916, watercolour on paper, 78.4 x 56.5 cm



Georgia O'Keeffe, Sunrise, 1916, watercolour on paper, 22.5 x 30.2 cm



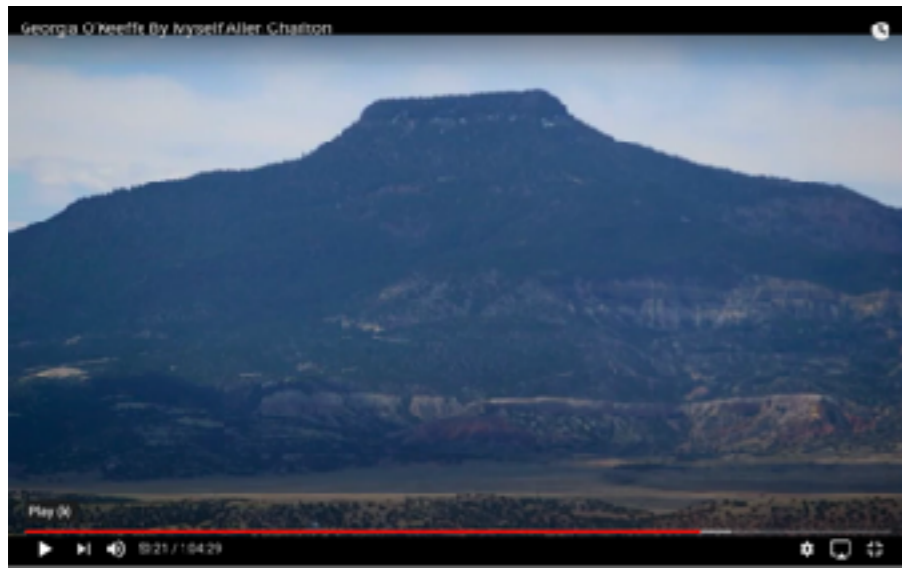


Lake George



Oriental Poppies 1927





*When I got to New Mexico, that was mine. As soon as I saw it, that was my country. I'd never seen anything like it before, but it fitted to me exactly. It's something that's in the air, it's just different. The sky is different, the stars are different, the wind is different.1*

*I feel at home here – I feel quiet – my skin feels close to the earth when I walk out into the red hills...3*



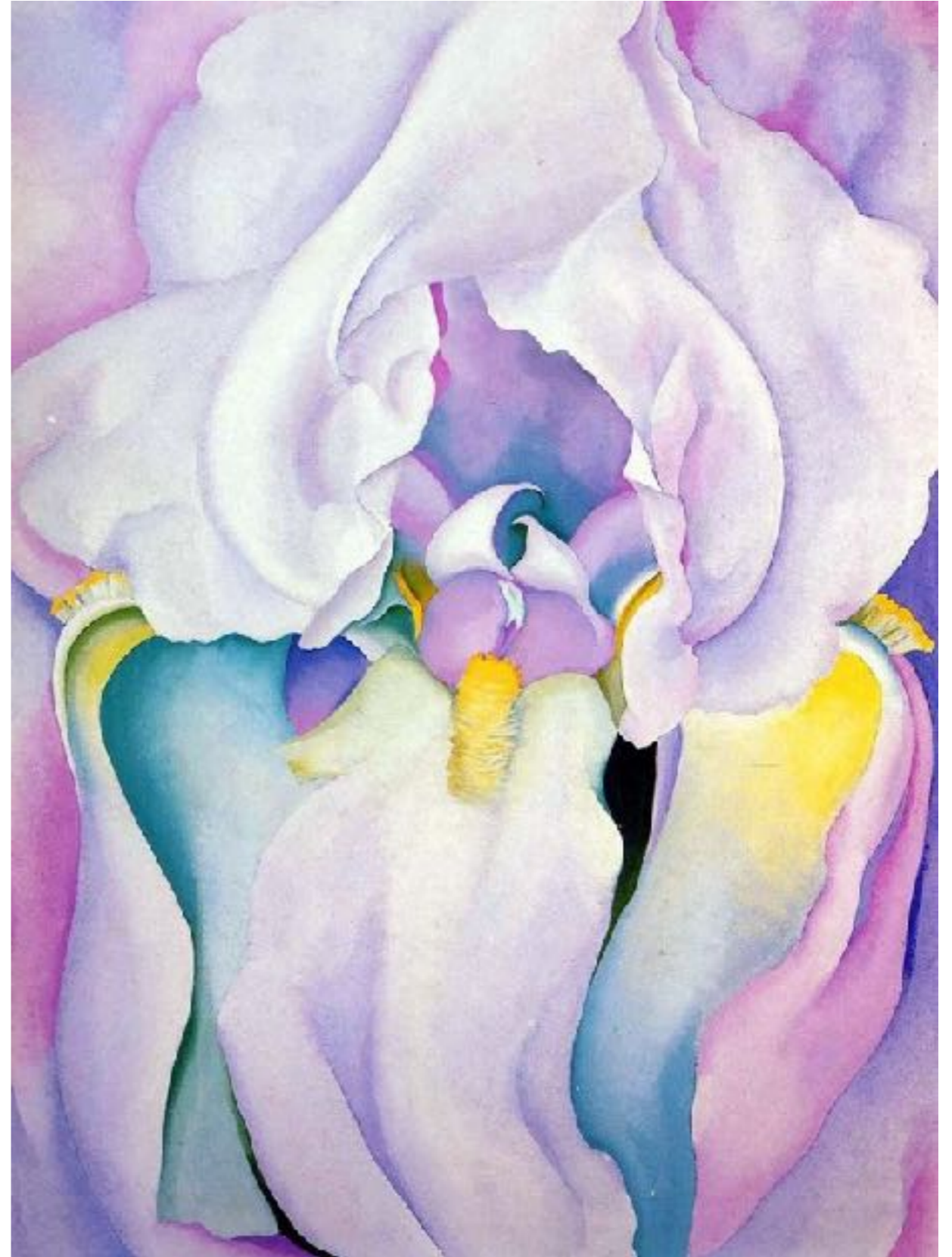
Georgia O'Keeffe, *Rust Red Hills* 1930, oil on canvas, 40.6 x 76.2 cm



O'Keeffe herself often commented that the colour and form of the flowers was more important than the subject matter, suggesting that she was interested in the natural form and capturing its beauty.



Georgia O'Keeffe, *Hibiscus with Plumeria* (1939).



*Light of Iris*, 1924



**The White Flower 1932**



Sky above clouds, 1965



Georgia O'Keeffe. Untitled (Abstraction Green Line and Three Red Circles) 1970s



Georgia O'Keeffe / Untitled (Abstraction Blue Lines) / 1970s / watercolor on paper

**Useful Links:**

**<https://www.youtube.com/watch?v=4DMMWaGm4jU>**

**<https://www.okeeffemuseum.org>**

**<https://www.tate.org.uk/tate-etc/issue-37-summer-2016/my-faraway-nearby>**