

Ethel Sands
(6 July 1873 – 19 March 1962)

Week One: Structure

Week Two: Colour

“ Her mind was like her room, in which lights advanced and retreated, came pirouetting and stepping delicately, spread their tails, pecked their way; and then her whole being was suffused, like the room again, with a cloud of some profound knowledge, some unspoken regret, and then she was full of locked drawers, stuffed with letters, like her cabinets. ”

Virginia Woolf, *The Lady in the Looking Glass: A Reflection*^[11]

About Ethel Sands by Virginia Woolf

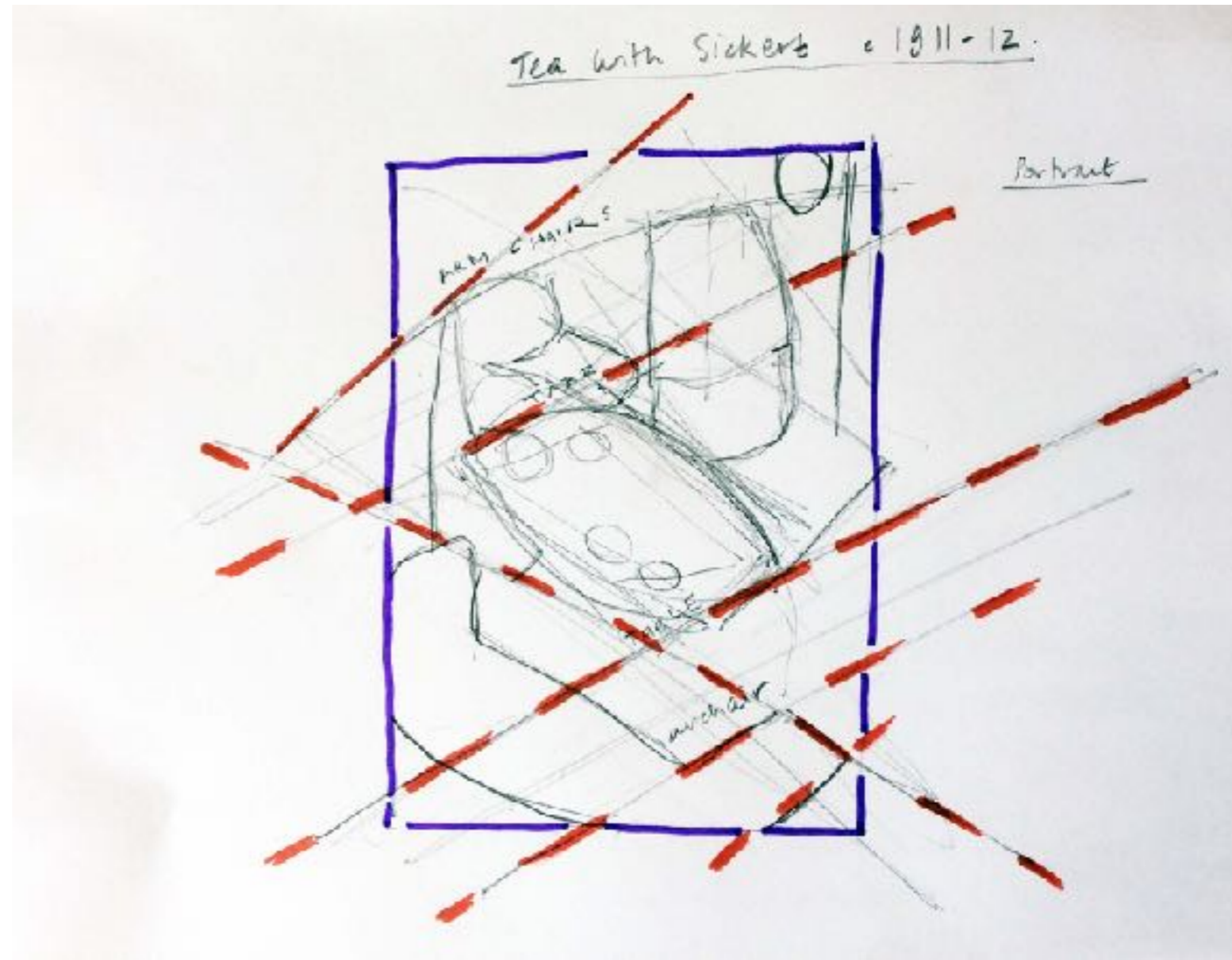
Further Reading

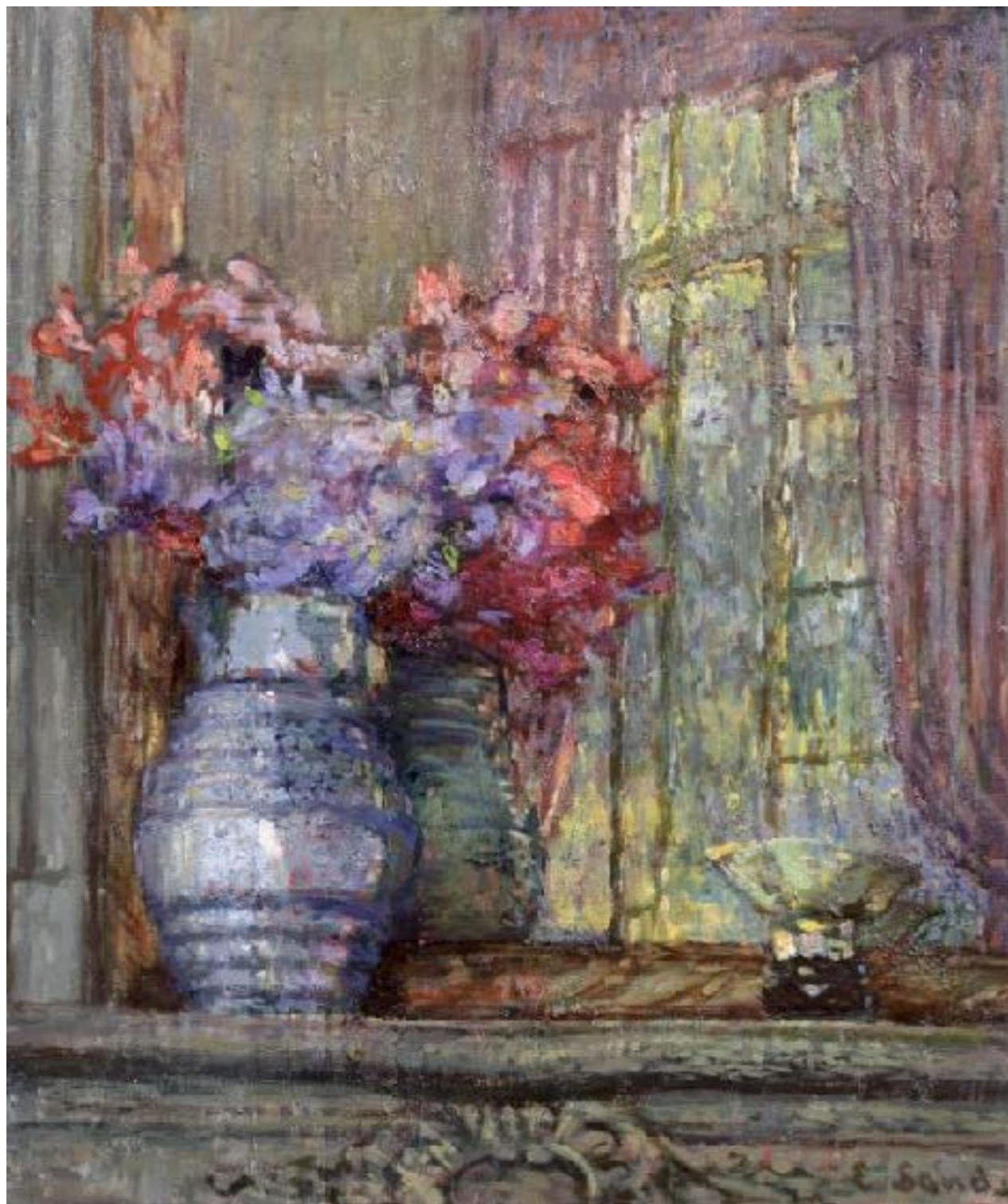
<https://www.tate.org.uk/art/research-publications/camden-town-group/ethel-sands-flowers-in-a-jug-r1139026>

This is a great resource that includes letters, photographs and links to music from the time.



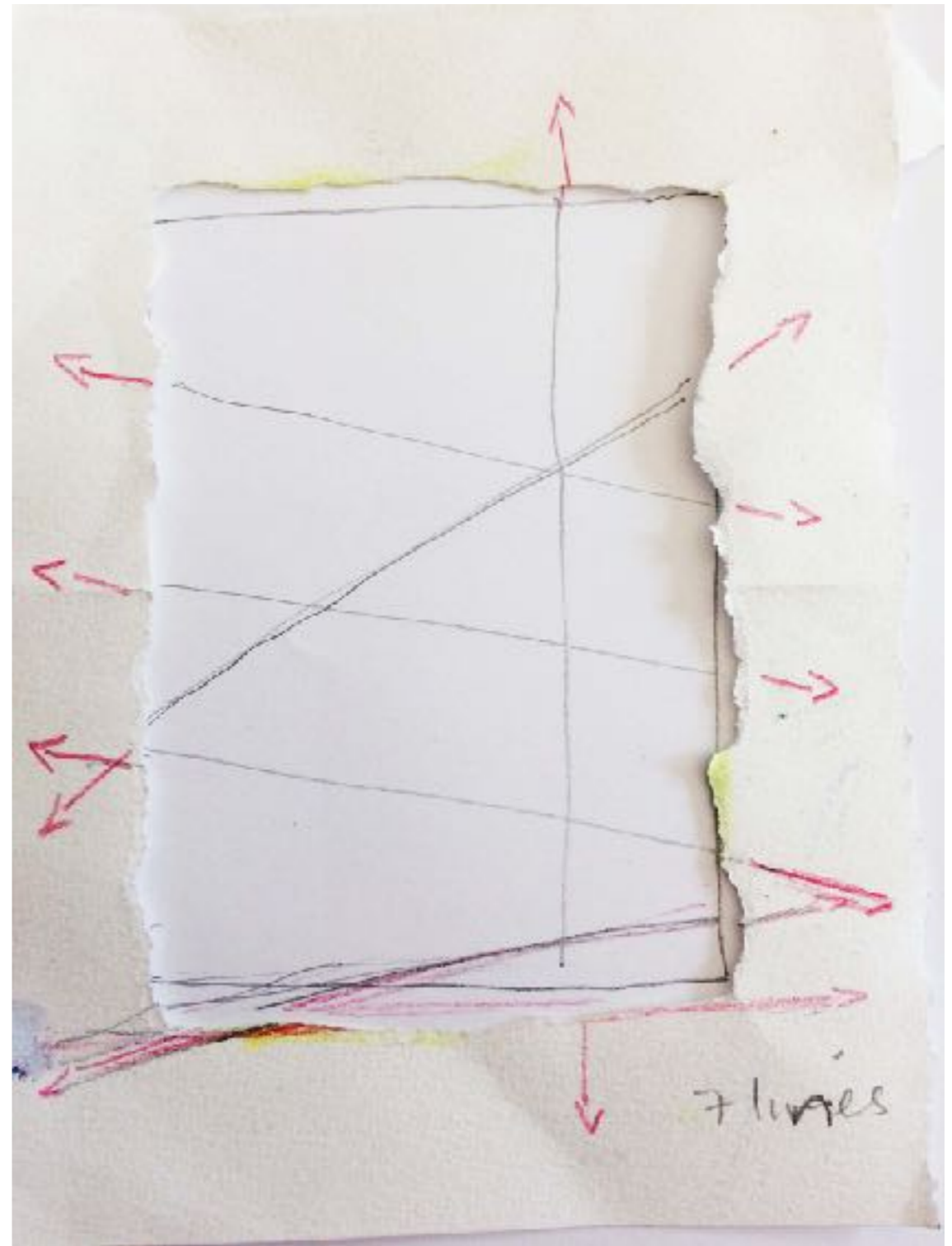
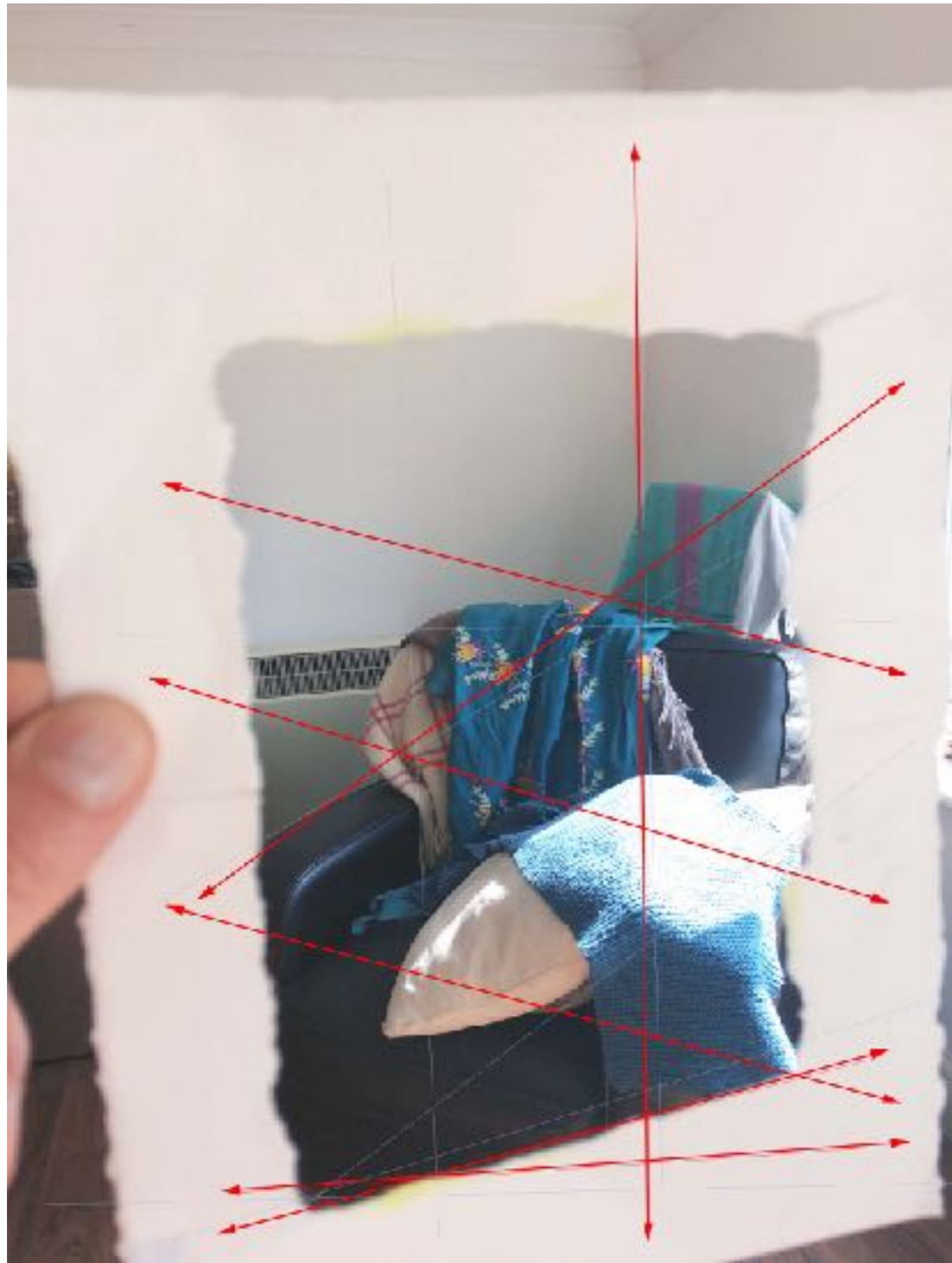
Tea with Sickert, 1911–1912





Ethel Sands. Flowers in a Jug. 1920's?



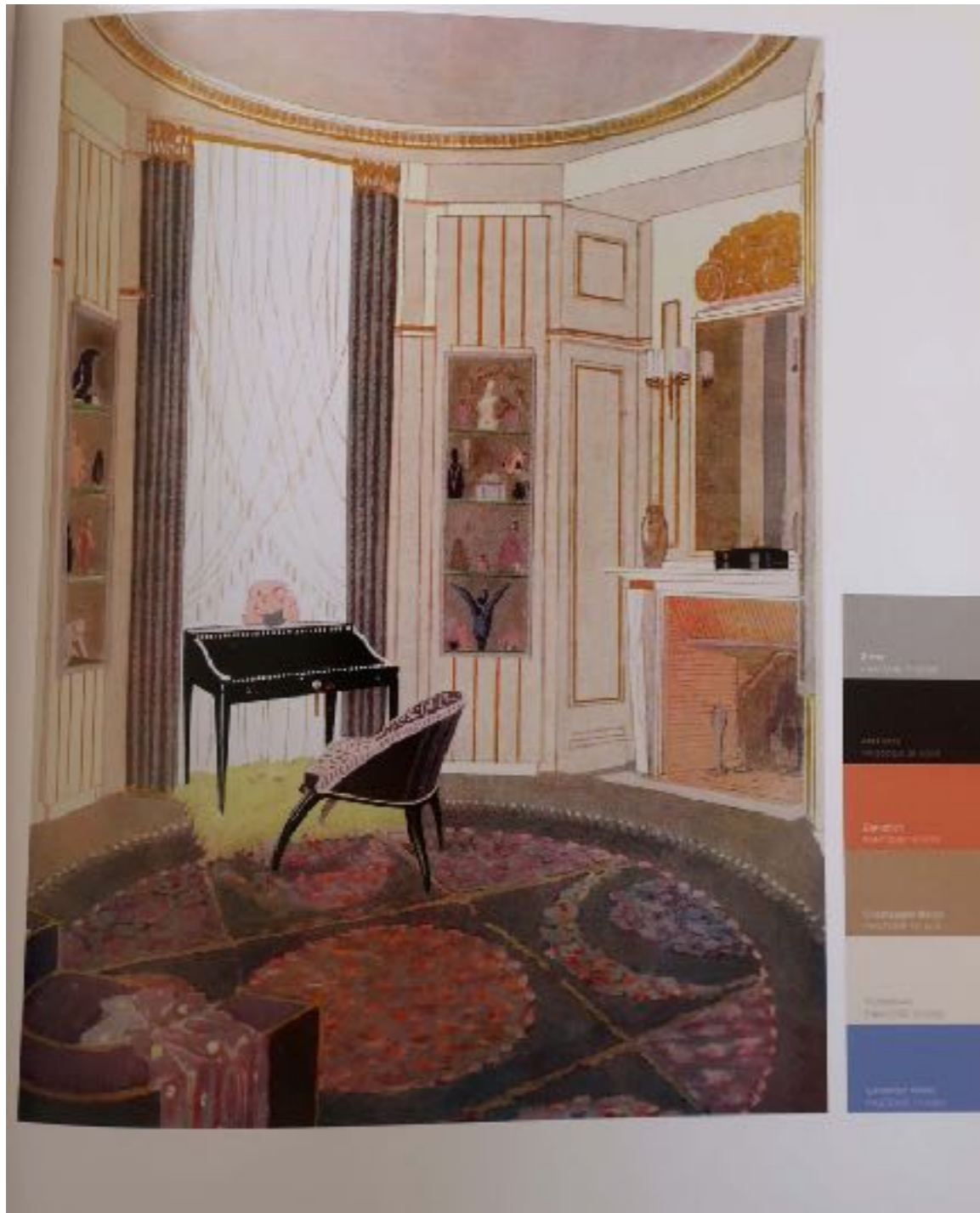




Edith Sands. Interior at Portland Place, London
'Decorative, Play of Sunlight, Naturalistic, Familiar'



Edouard Vuillard Sunlit Interior c.1920
'.....set painting in youth and decorative interiors later'



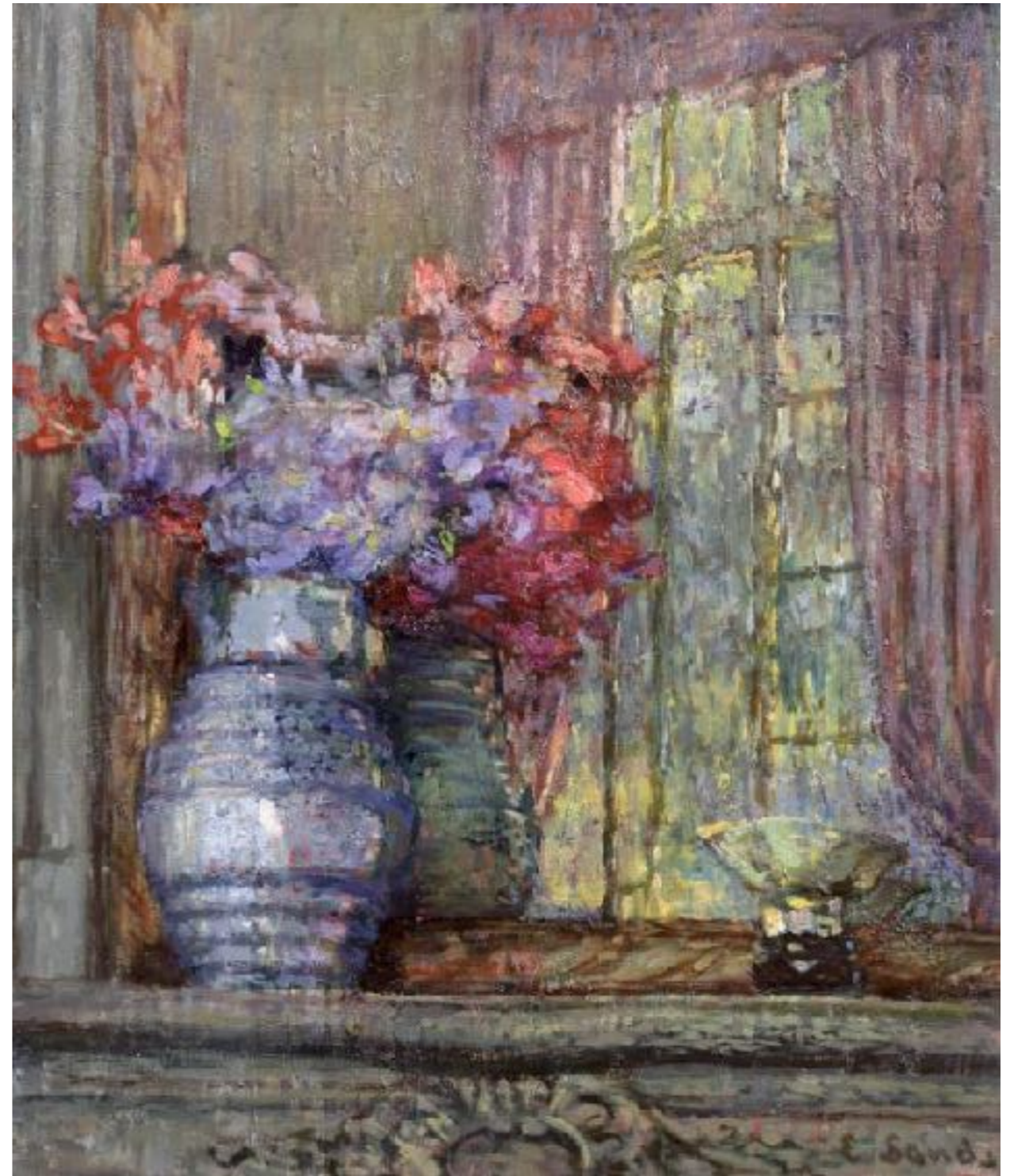
Dressing Table and Chair 1922-1926
 Design by Emilie-Jacques Ruhlmann,
 pochoir print from Interiors en Couleurs by Leon Deschairs, Albert
 Levy.Ed.
 'Only the very rich can pay for what is new and they alone can make it
 fashionable' E.J Ruhlmann



Ad. For Kelloggs Toasted Cornflakes 1907



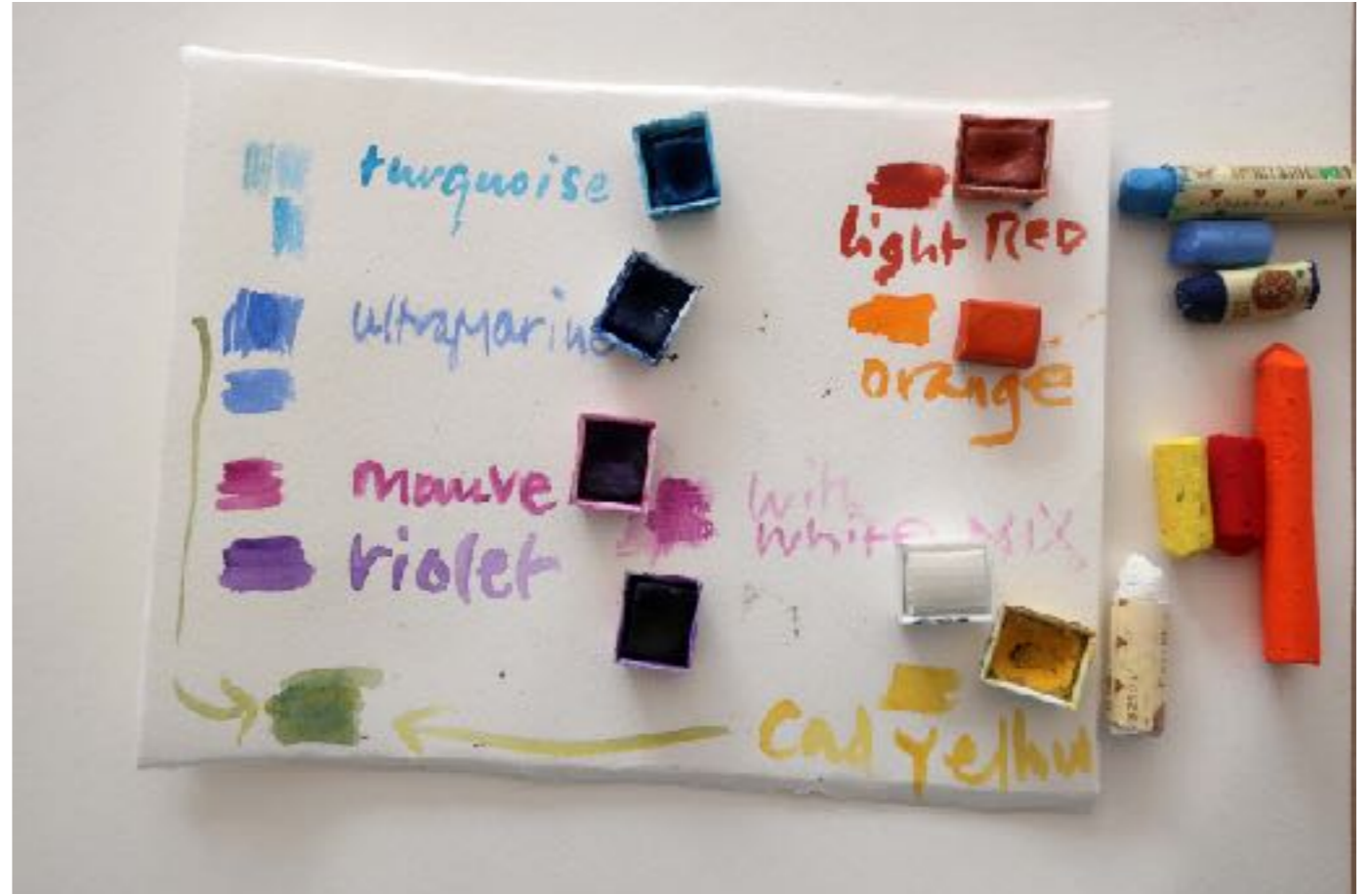
Matisse. Open Window 1905



‘.....a greater awareness of light and colour and the shifting pattern of the natural scene. **Brushwork** became rapid and broken into separate dabs in order to render the fleeting quality of light.’
<https://www.tate.org.uk/art/art-terms/i/impressionism>

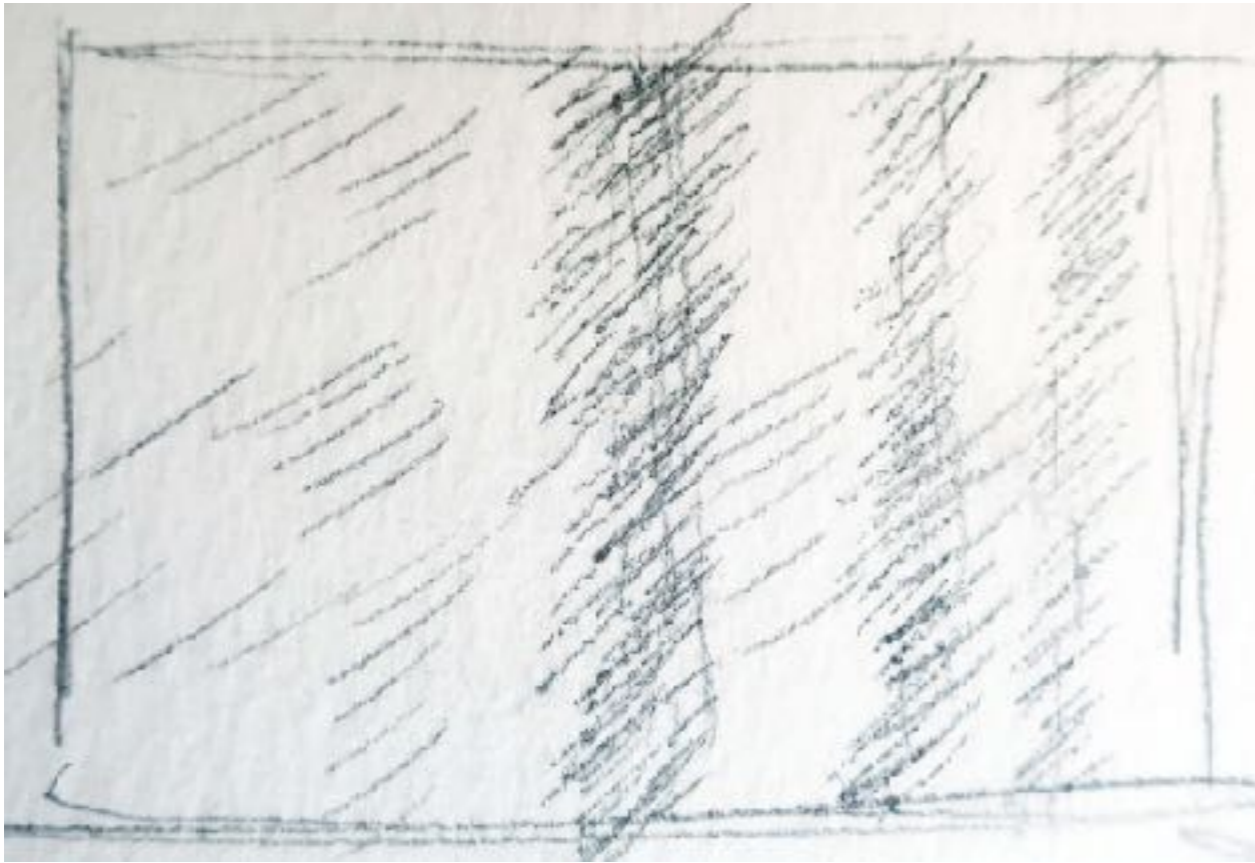


Tea with Sickert, 1911–1912





Viewing Frame made by opening put my Polenta Box packaging



Draw the Frame.
Continual diagonal dash marks to build shade.
Do not stay in one place for long



Create another frame.
Choose 3 colours
One for darks
One for Lights
One to compliment if you decide to later



Flora's Sketch. 3 colours

Idea: Colour, Light and Air is everywhere and always moving.

Edith Sands gestures and colour Palette reflect the fashions of the time, her personal life, social life and the artist ideas about expressing light similar to the Impressionists that strove for creative freedom