

CLARICE BECKETT

21 March 1887 – 7 July 1935 . Australia

Modernist artist, 'flatness of the surface in her painting'

Portraiture, still lifes, outdoor process of painting landscapes

She painted sea and beachscapes, rural and suburban scenes, often enveloped in the atmospheric effects of early mornings or evening.

Clarice Beckett | A leading female artist
<https://www.youtube.com/watch?v=cMtCu9ij-2w>



“To give a sincere and truthful representation of a portion of the beauty of Nature, and to show the charm of light and shade, which I try to give forth in correct tones so as to give as nearly as possible an exact illusion of reality.”

**Australian tonalism was an art movement that emerged in Melbourne during the 1910s.
Australian Tonalism is characterised by a particular "misty" or atmospheric quality**

Tone takes precedence over colour so the paintings is ordered according to tonal impressions that the eye received

Founded by artist and art teacher Max Meldrum

He said: "Scientific Order of Impressions". He argued that painting was a pure science of optical analysis, and believed that a painter should aim to create an exact illusion of spatial depth by carefully observing in nature tone and tonal relationships (shades of light and dark) and spontaneously recording them in the order that they had been received by the eye.^[1]

**Famous Tonalist Painter is:
James Abbott McNeill Whistler
1834–1903**

Quick Tip Tonalism - <https://www.youtube.com/watch?v=EprnOmDAOR0>



Nocturne: Blue and Silver - Chelsea 1871



Almond Blossom
Oil on Board
49.7 by 34.5 cm



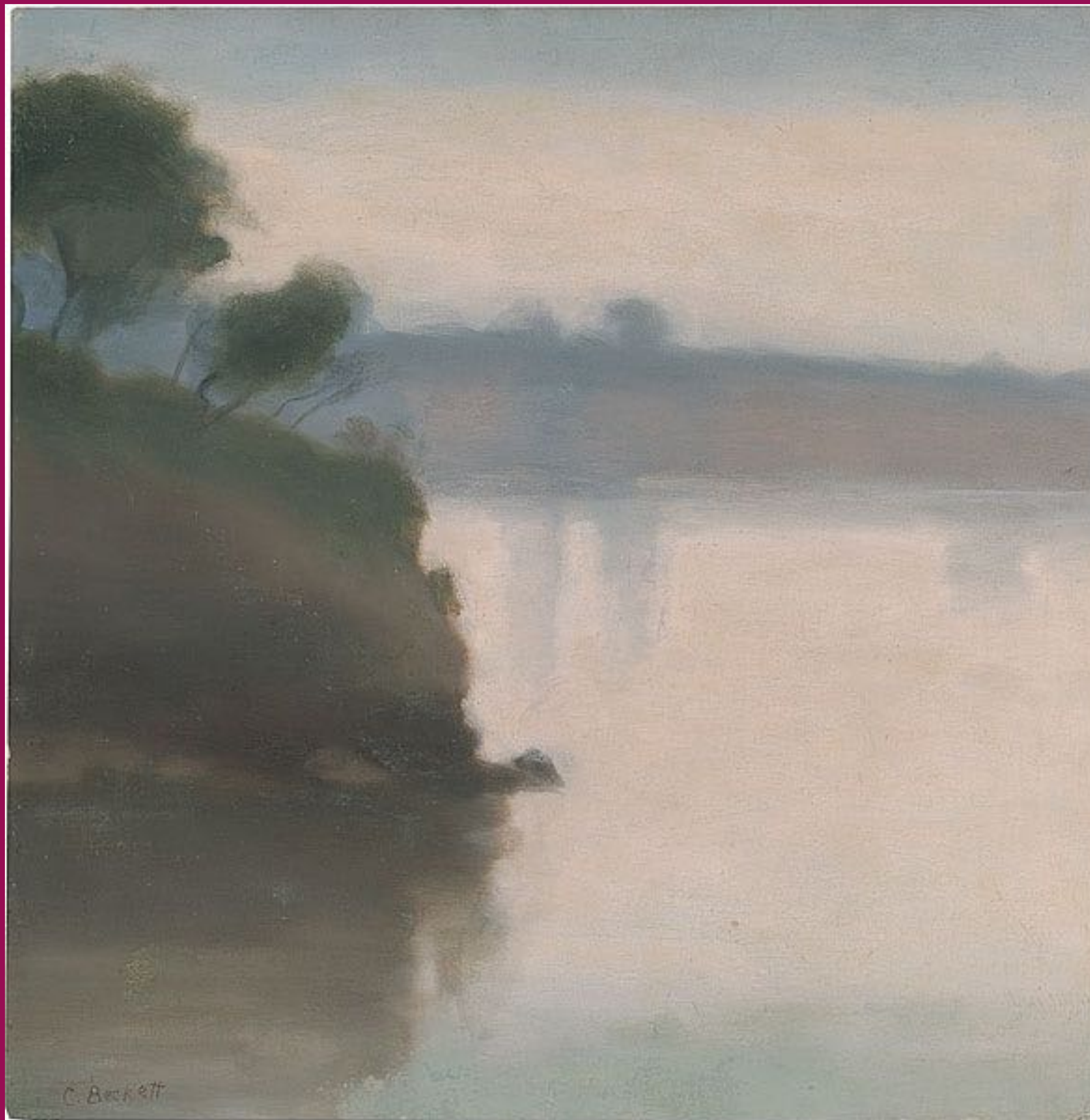
Silent Approach, c. 1924



Chestnut Avenue, Ballarat
Gardens, c. 1927



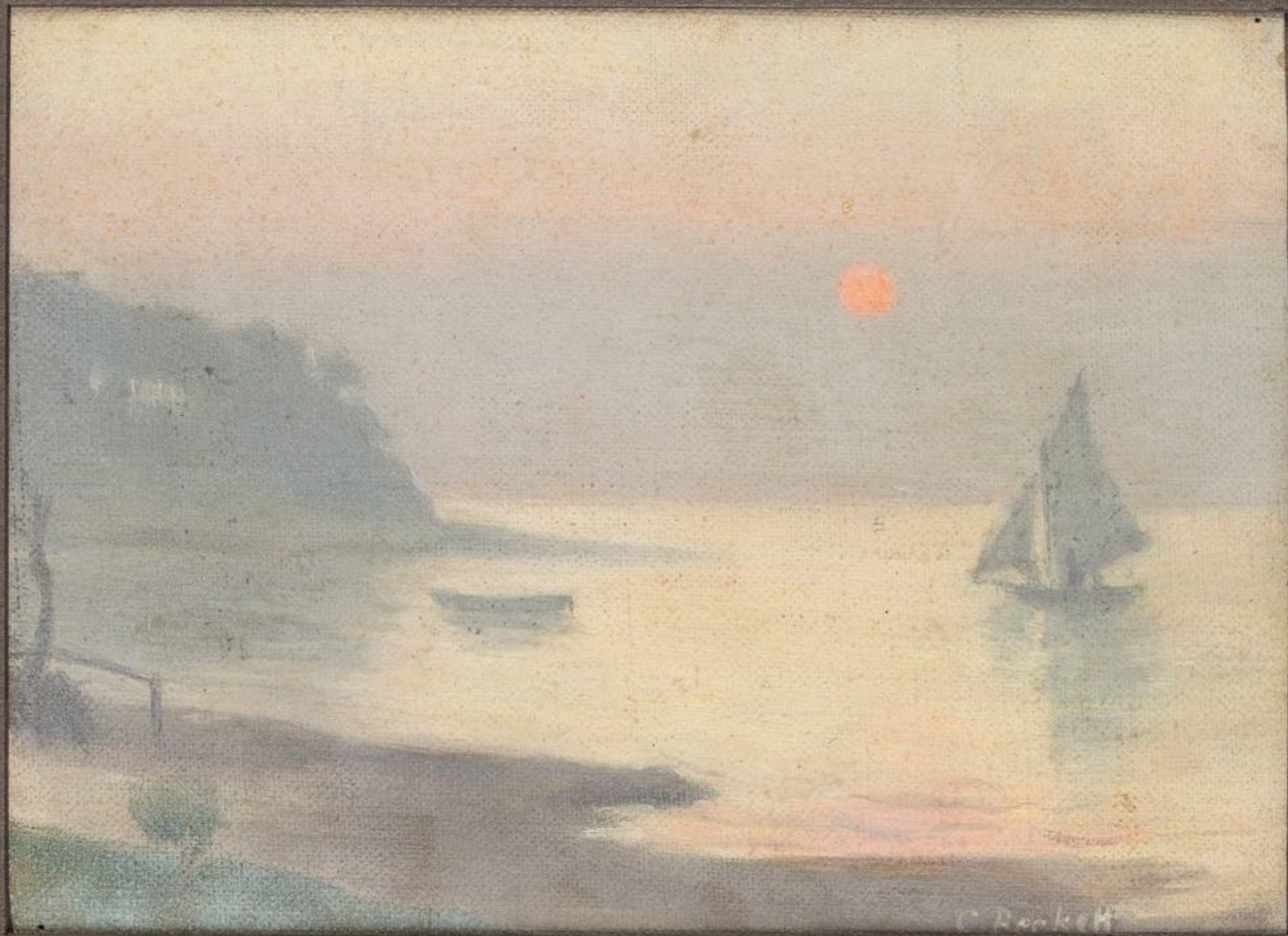
Princes Bridge Station, c. 1928



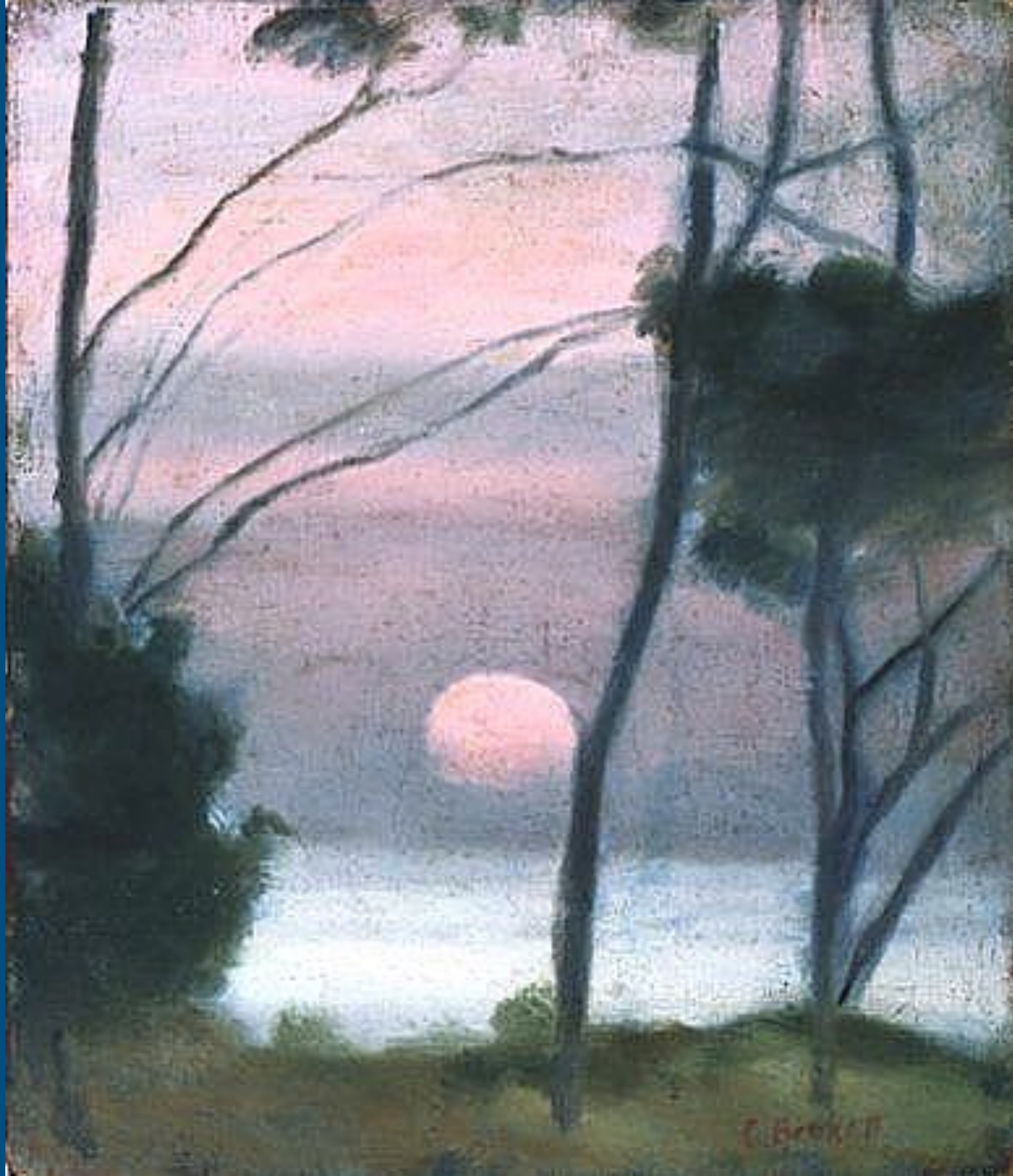
Misty morning, Beaumaris.1925.oil on cardboard
50.0 h x 49.0 w



Summer fields, 1926, Naringal, Victoria. Oil on board, 24.5 x 34.5cm



C. Beckett



Evening Light, Beaumaris, 1925



Wet Night, Brighton 1930