

CHILA KUMARI SINGH BURMAN

1957, Bootle, Liverpool

RESEARCH: CHILA KUMAR

<http://www.chila-kumari-burman.co.uk/index2.htm>



BEST
ROMANTIC HITS
OF BOLLYWOOD

[https://
www.youtube.co
m/watch?
v=poHwjXG5NtU](https://www.youtube.com/watch?v=poHwjXG5NtU)

TATE SHOTS: Chili Burman in her own Words

<https://www.youtube.com/watch?v=3PiAJmH-YRQ>

Materials included wrapping paper from Nepal, gems from Sri Lanka, fairy lights, Indian stickers and giant plastic eyelashes.



Chila Kumari Burman, *My Tuk-Tuk*, 2018. Image: Jason Hynes for MIMA. © Chila Kumari Singh Burman.



Chila Kumari Burman, *Cornets and Screwballs Go Vegas*, 2010 © Chila Kumari Singh Burman

'My father was a tailor and magician but when the family arrived from India to Merseyside in the 1950s he couldn't find work so he ended up buying an ice cream van and became an ice-cream man. His van was called Burman's and it had a big tiger on top.'



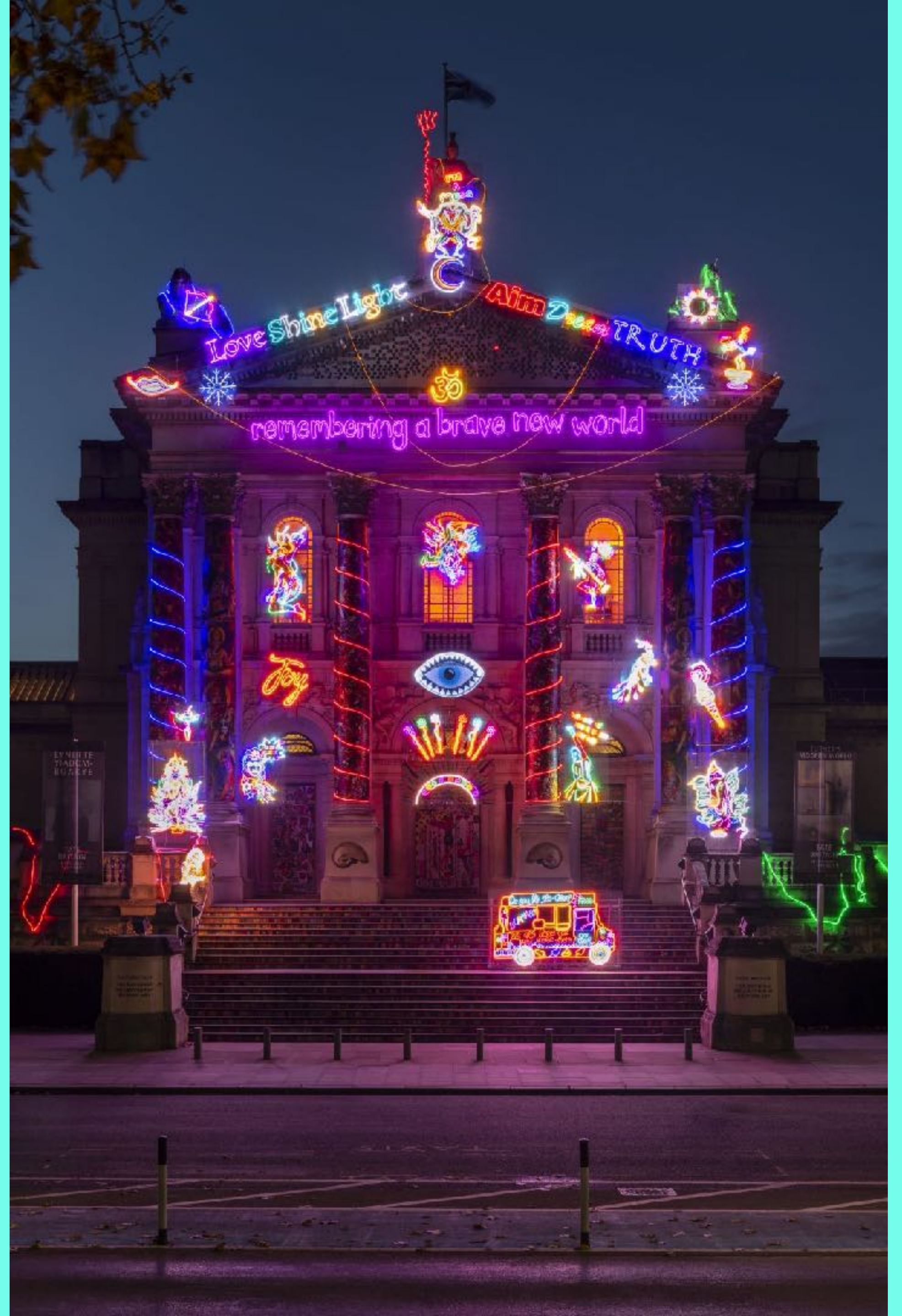
Chila Kumari Burman, *Eat Me Now*, 2013, mixed media. © Chila Kumari Singh Burman.







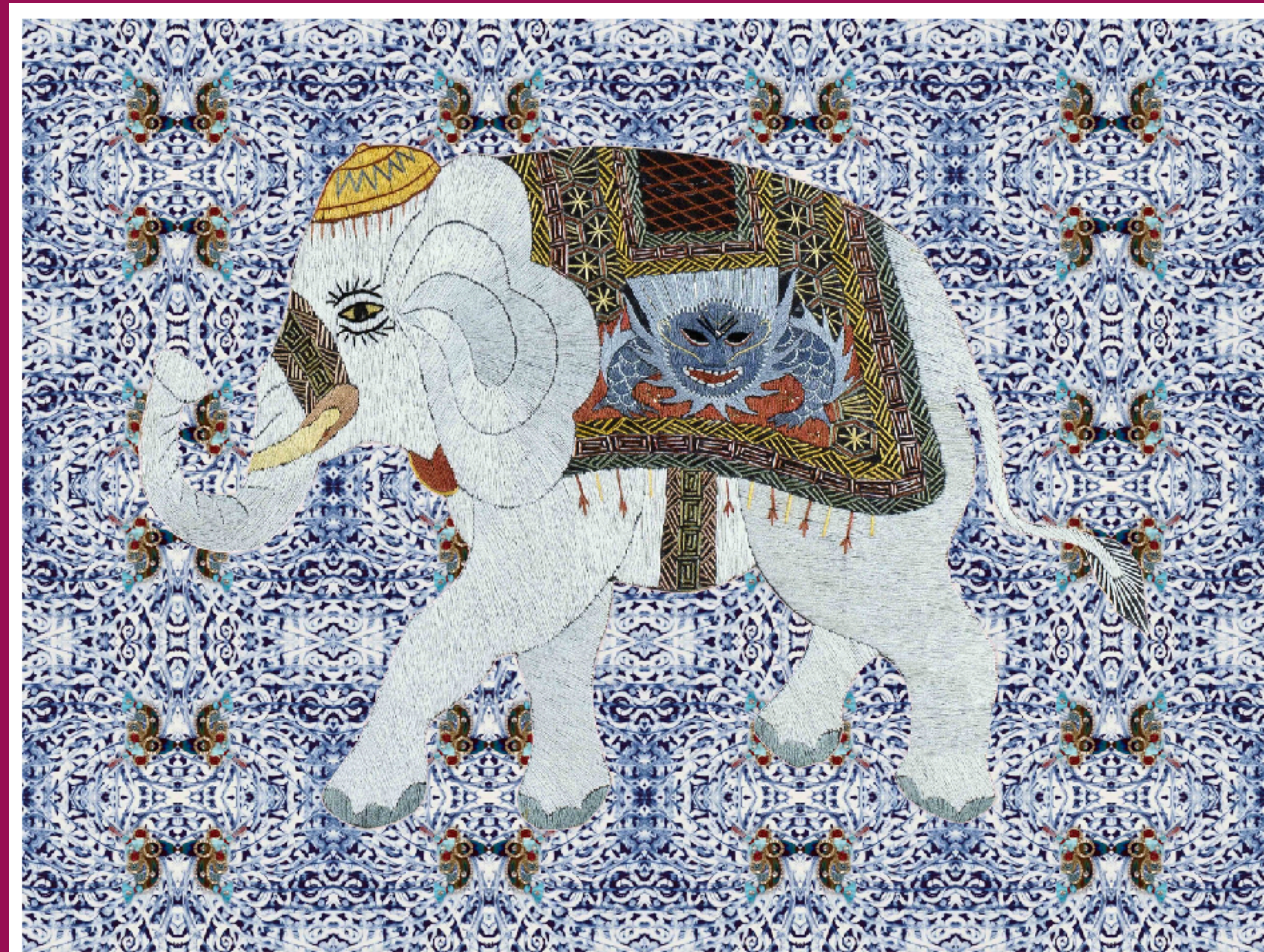
Chila Kumari Singh Burman – Remembering a Brave New World. Image credit: Tate photography (Joe Humphrys)



COLLAGES

These celebrate themes and achievements in Indian science within a broader cultural, political and religious history.

'I use collage to open up possibilities. I create images, turn them into prints and then add metallic acrylic paint, fluorescent poster paints, felt tip pens, glitter, crayons, spray paint and pastels.'



The Best Elephant in Town © Chila Burman



Mixed-media collage 'Parvati - Hindu Goddess' © Chila Burman, 2017